

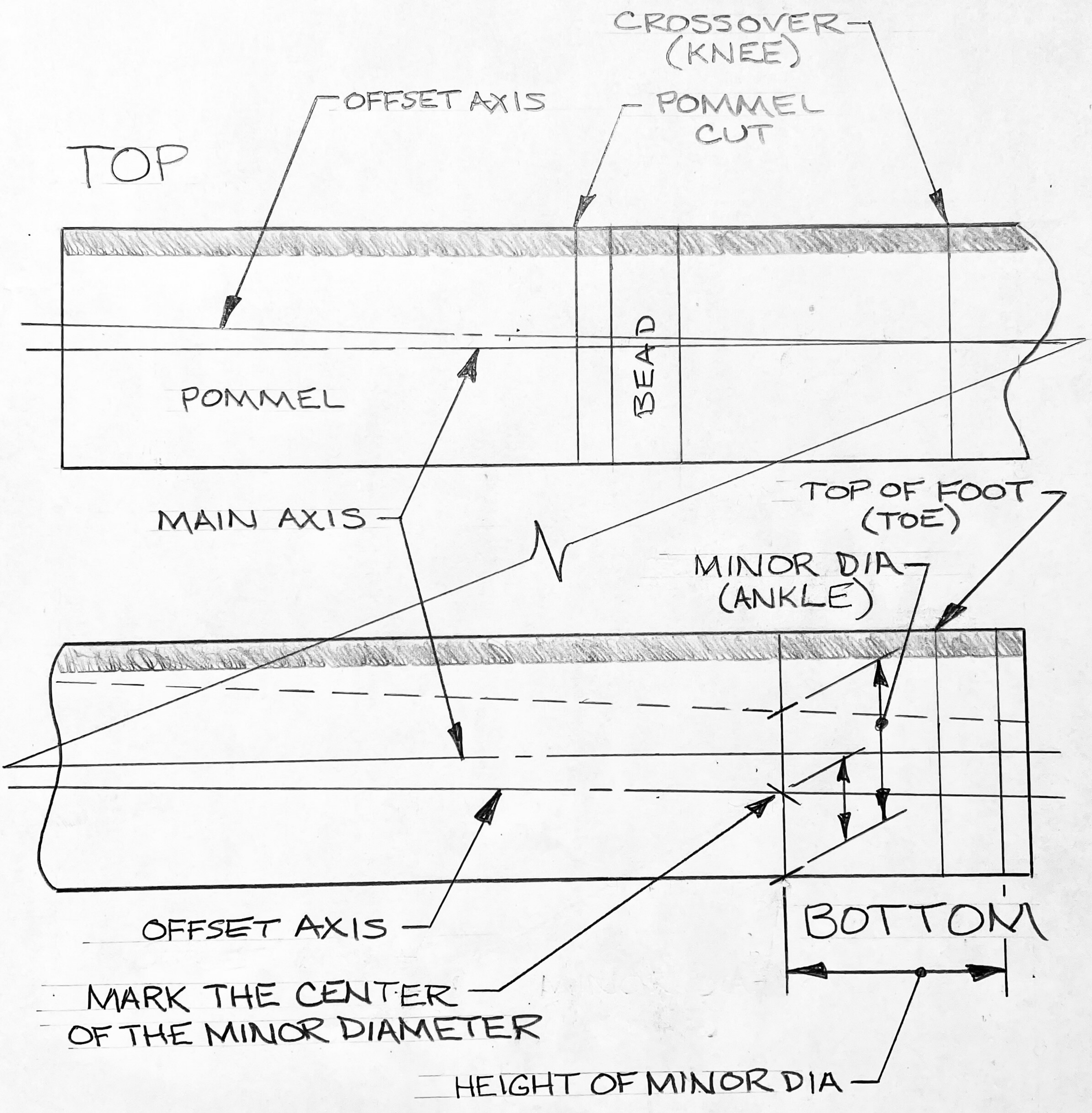
Understanding the Lathe Turned Cabriole Leg

Prerequisites

1. Determine the height of the table (the length of the leg)
2. Determine the size of the pommel (most likely, a function of the table size).
3. The length of the pommel (determined by the size of the apron).

Designer Decisions

1. Detail of the area below the pommel, including the crossover point (knee).
2. Diameter of the foot (toe).
3. The details of the foot.
4. The diameter and height of the minor diameter (ankle).



CROSSOVER (KNEE)

OFFSET AXIS

POMMEL CUT

TOP

POMMEL

BEAD

MAIN AXIS

TOP OF FOOT (TOE)

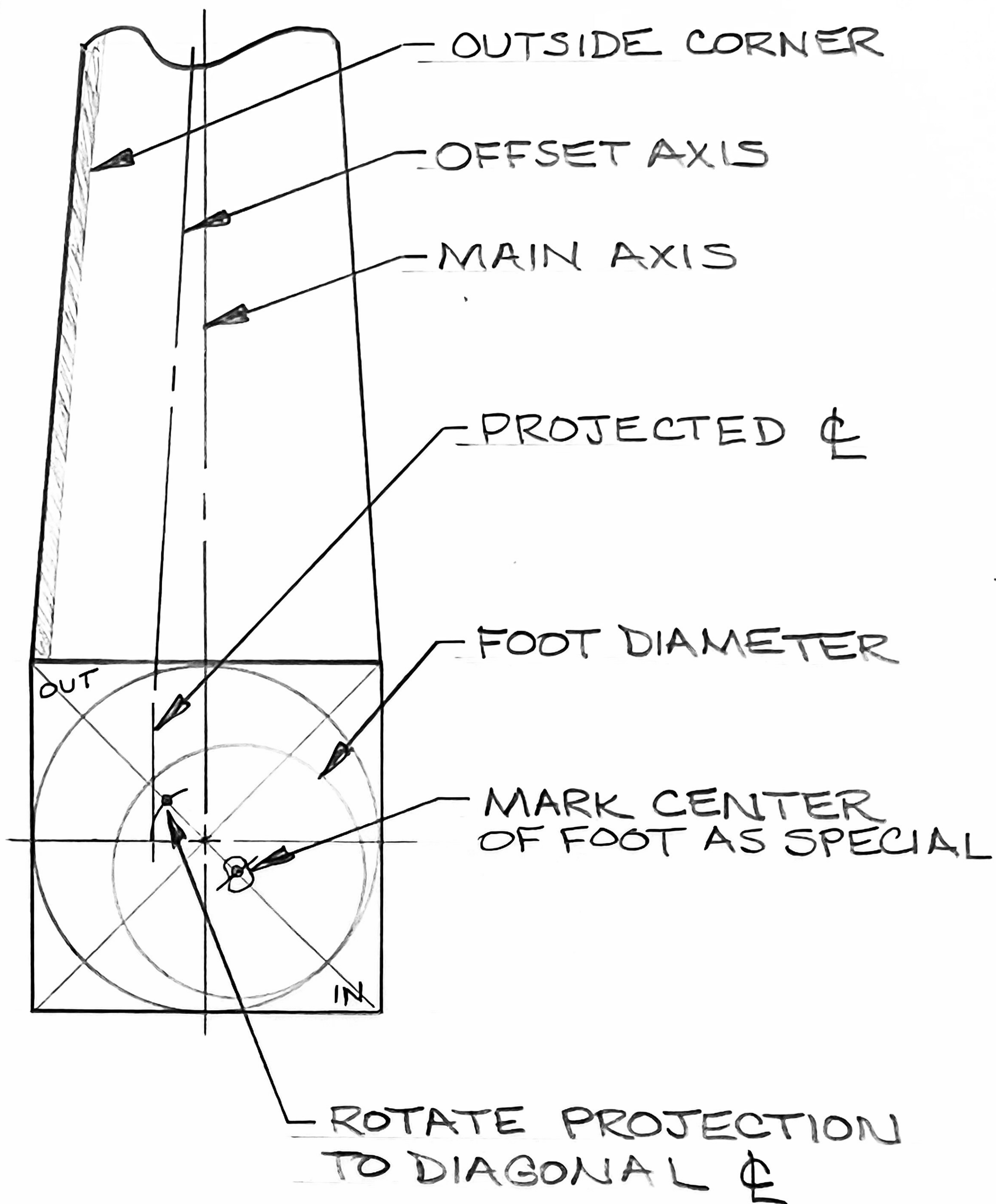
MINOR DIA (ANKLE)

OFFSET AXIS

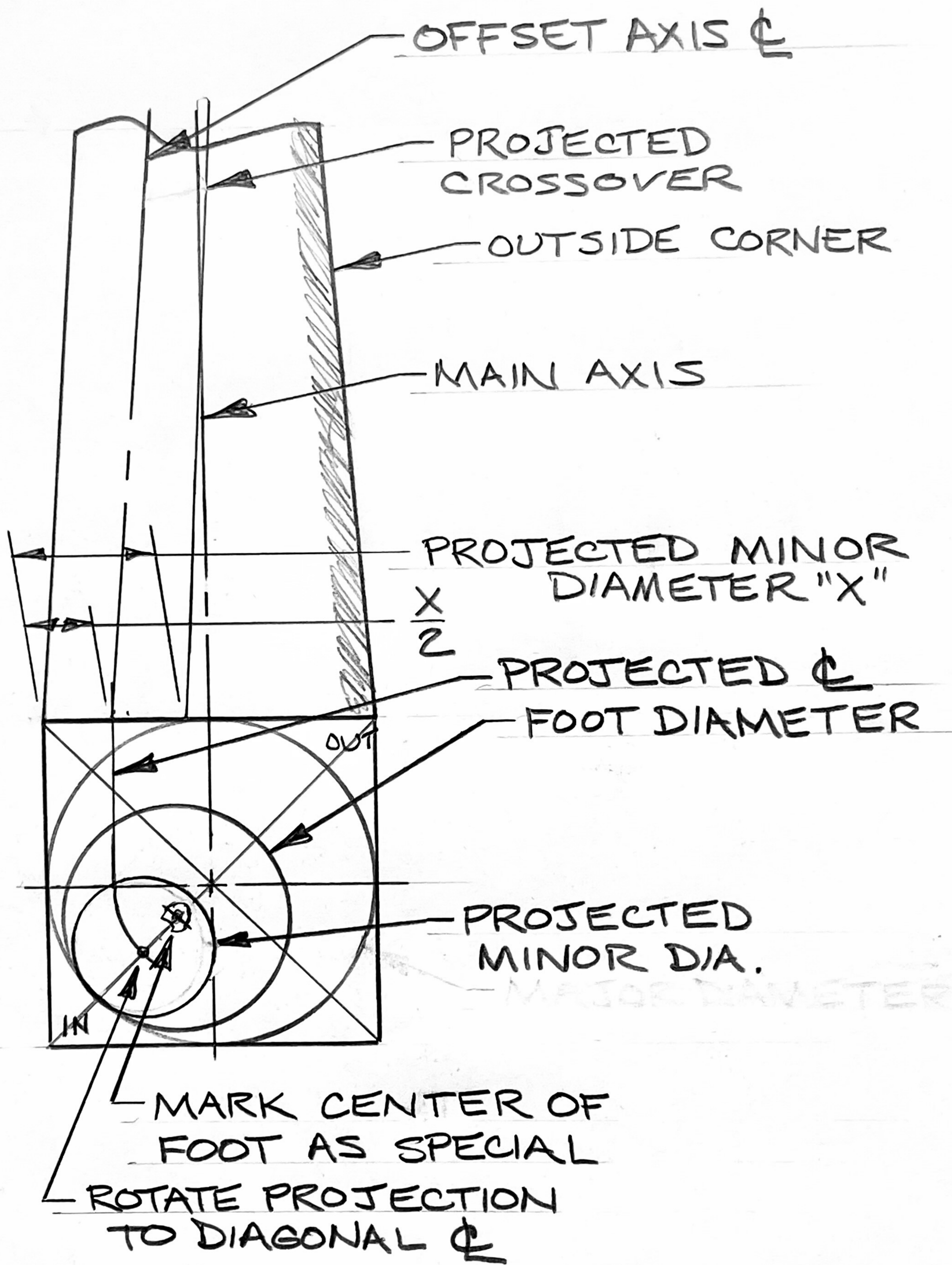
BOTTOM

MARK THE CENTER OF THE MINOR DIAMETER

HEIGHT OF MINOR DIA



TOP END



BOTTOM END

OUTSIDE CORNER

INSIDE CORNER

$1\frac{3}{4}$ SQ

$1\frac{3}{4}$ DIA INITIAL TURNING

$1\frac{1}{4}$ DIA FOOT

$\frac{3}{4}$ DIA LEG

3

