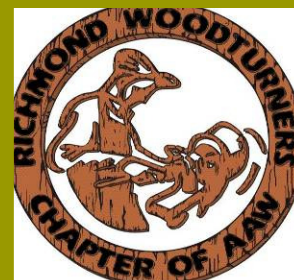




# Richmond Woodturners' Newsletter



## Next Meeting:

@Woodcraft, old Circuit City Plaza, 9862 West Broad St (Rt. 250W), Richmond, on the third Thursday of every month, 6:30PM. Refreshments provided.

## July 16

Editor: Betsy Mack

[bcmack@comcast.net](mailto:bcmack@comcast.net)

## Program Schedule:

July: Bruce Robbins -CNC lathe

August: Dick Hines

Sept: Brian Nobel-Marx

## Challenge Schedule:

July: Pen turning

August: CNC lathe project?

Sept: Dick Special?

## Inside this Issue

Meeting Vibrations	2
Challenge & Show & Tell	3
Upcoming Shows	2
Visitors & New Members	5
Officers & Club Information	5
AAW News & Information	5
For Sale, Buy, or Trade	6

## July 2009

## DEMO: Pens with Brien Goulet

### Helpful hints:

A good starting point is pen kits. There are tons of them to choose from and you get what you pay for. Wall Street kits are easy to put together and good quality. European pens have twist tops and Brien hate them. Slim-lines use the Cross-type ball points while the twist ones use the Parker-type parts and you can trade out the center for more colors and a roller ball. Some pens use a Schmidt-type refill. Different style pens use different sized bushing and different sized brass tubing. Know your components and try to stick to the same type to reduce workshop clutter. (Since more is better you will buy them later if you keep up the pen turning and join the pen club. Then you can buy plastic parts trays to help organize all the accumulated different size pen parts, bushings and drill bits.) Ray has a nice selection of kits and you can download instructions from the Woodcraft website. You want durability in all the parts and finish of a pen. Best parts plating is platinum, sterling silver and Rhodium. The hardest finish is CA glue, but it is hard to get a smooth finish for beginners. Poly & lacquer finishes are OK if you build up lots of coats. In all finishes, sand to 400 grit minimum, wipe down the wood with acetone; apply thinned finish with paper towels, after ever other coat sand lightly with Abranet sanding mesh (180-4000) working your way up in grit. Final sanding is with micro mesh pads and polish. Don't use ebony as Blackwood is better. Two part epoxy to glue the brass tubes in the wood. Tint the epoxy or paint the brass tubes before gluing them into light colored acrylics. It will show threw the thin walls. Pens use more exotic woods because you don't use much. Dust collection is a must with these woods. Bone/ antler need sharp tools for thin shaving. They stink. Bushings wear out. Get about 20 pens from a set unless you're mean to them. Use calipers & sanding to final shape.



[Continued on page 2]

**Shows Coming Out Of VA:**

**Sept 18-20**, Turning Southern Style XV, Helen GA,

[www.gawoodturner.org](http://www.gawoodturner.org)

**Oct 23-25**, Woodturning Symposium, Greensboro, NC,

[www.northcarolinawoodturning.com](http://www.northcarolinawoodturning.com)

**Shows Coming In VA:**

**Sept 25-Oct 5**, State Fair of VA, I-95, Caroline County.

**Oct 10-11**, Crozet Arts & Craft Festival, Crozet

**Oct 17-18**, Greater Lanexa Studio Tour, Lanexa.

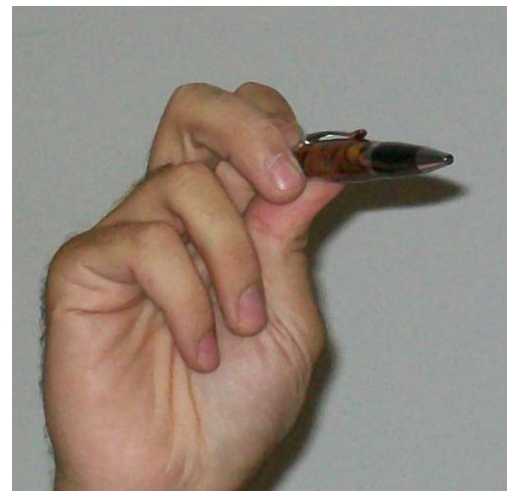
**Turning Southern Style XV** Just a reminder - the early registration discount ends on July 31, 2009. Register now and save \$20. Beginning August 1, 2009, it will cost you \$20 more than it will today - so don't delay. Also, registration is limited so don't risk being locked out of this spectacular event.

[symposium@gawoodturner.org](mailto:symposium@gawoodturner.org).

Keep your tools sharp & bandages close



**[Pens from page 1]** Let's make a Slim Line/Wall Street pen in Acrylic. 1. Work on the brass tube. Remove the coating with a Brillo pad or sand paper. Drill a 5" long pen blank (1/8" extra for blow out at the ends) slowly, clear out the chips often and watch out for too much heat built up. Keep your drill bits sharp (Drill doctor) and if your drills two parts, drill them from the center where they will meet. Glue in the brass tube. Square up the ends with an end mill in a drill press (just to the brass). 2. Use a regular mandrel (Pro mandrel is not needed), bushing, pen blank and mandrel nut. Leave the nut loose until the tail stock is in tight. Tighten just enough to hold the blank. 3. Tools Brien uses are a spindle gouge and a Sorby spindle master. Also a small parting tool is handy too. Turn the acrylics faster ~1800 rpm. Leave the blank proud of the bushing to have room for sanding. 4. Abranet mesh sheets are the best. Can't use hook & loop with them. But you want to hold them in your hands so you can check for heat build up. Grits 180 to 320 are used. Then switch to Micro Mesh pads (1500 - 3200). A little Beal buffing and your pen is finished. 5. Putting the parts together. Check the tube insides for glue buildup. Remove with a round file. Use a pen vise to push the parts together, align the parts and don't force it.



The board met meeting and ap-change. We are

**Meeting Vibrations**

before the regular proved the name now the *Richmond Woodturners*. The Segmented SIG showed off their first project. We hope there will be more in the future. It will now proceed to NM for the AAW Symposium with Lee S. We have most of the parts for the new video setup and a cabinet is being made to house it all. Cost \$2000+. Guy arrived with the new photo tent setup, tripods and box to hold it all. He demoed it while taking the Show & Tell photos. Look for them on our web site.

Jim B has lined up David Ellsworth for May 27-29, 2010. He charges \$750/day. Two days for the club demo and 1 day for mentoring (5 max). Don't wait too long to sign up. Lee is still in contact with Jimmy Clewes. No date has been set yet.

Woodcraft has cherry for sale. We will split the profit with them. Barbara D. talked about her Velcro & foam padding buy. Goop or E6000 glue will work with them. Others might eat the foam.

Big winners of the Woodcraft Show were Jim B., Matt B. and Brad B. Gee, all "B" last names. "Women in Wood" was a good show, but had a poor turn out. If we want more big names in Richmond, we need to support them.

# SHOW & TELL

## PICNIC AT SID & PENNY MACE

*ITEM 1:* Brad Bradford and Judy Penry are to be the picnic's entertainment. Judy is an excellent basket weaver and in this area quite sought after to teach Nantucket Baskets. To do these baskets, you need a mold to work over. She and Brad have known each other many many years and he has been making her molds a great many of those years.

*ITEM 2:* We are again very much looking forward to hosting the picnic this year and Sid would like everyone to know that he is cooking pulled pork and making beans. This knowledge leads us to the following plan ---

EVERYONE needs to bring their drinks of choice, their chairs, PLUS

A---H bring appetizers (Harry H. -rolls as before)

I---P bring sides

Q---Z bring desserts



**Show & Tell:** Bottle stoppers, seam ripper, hollow vessel, wedding cake stand, chair, candle stick, goblet, pens

**Wood Used:** Cherry, sycamore, cherry, oak, mulberry, maple, kingwood. Ash, corian

**Artists:** Betsy M, Barbara D., Brian G., Bill J., Dan L.

## Group Project for AAW

Did you know Sid M. carves ducks?



**Officers for 2009**

President:	Lee Scarbrough (804-520-1745)
	<a href="mailto:franlee1@verizon.net">franlee1@verizon.net</a>
1 <sup>st</sup> Vice President:	Guy Cox (540-373-3109)
2 <sup>nd</sup> Vice President:	Brian Goulet (804-368-0464)
Treasurer: /Bulk Orders	Matt Baker (804-440-3581)
Secretary/Newsletter	Betsy Mack (804-730-8324)
	<a href="mailto:bcmack@comcast.net">bcmack@comcast.net</a>
Librarian:	Dick Hines (804-966-5204)
Membership:	Danny Luttrell (804-271-4799)
Website	Barbara Dill (804-749-8565)
Past President Board Members:	Mike Lane (804-932-5149)
	Jim Bumpas (804-526-2873)
	Dan Luttrell (804-271-4799)
	David Sterling (804-755-6087)

**Visitors / New Members:****1st time visitors:**

Ruth Hoffman, Gordon Andrews

**1st time visitor and new member:**

Doug Murray

**Returning Member:**Brook Hamilton **Membership now at 81****Message from your President:**

The 2009 AAW Symposium in Albuquerque, NM is over and it was as spectacular as ever. Let me first suggest that you view the AAW website. Click on the 2009 Symposium of the AAW (Updated July 1, 2009) and then click on the latest entry to see the instant gallery, collaborative chapter entries, and pictures from the banquet, awards presented, etc. Especially take a look at our competition in the Collaborative Chapter  
**[Continued]**

**Dues:** \$25 individual, \$35 family & \$15 student. Member applications are available upon request at meetings or via email.

**Library:** Contact the club librarian to borrow tapes and other publications related to woodturning, for only \$2. Loose it and you bought it

**AAW Membership:** Dues are \$45 per year. For this, you receive 4 issues of "The American Woodturner" (a \$30+ value), a great resource directory (over 450 pages), a huge annual symposium, personal grant opportunities, third party liability protection, and much more. If you are the least bit serious about woodturning, you can't afford to miss out on all this.

**[Message]**

Challenge. We were up against 12 superb creations of wood art. We received no awards, but got a lot of compliments on our efforts. Special thanks go to Brad Bradford who kept us focused through 9 weeks of fun! He was a great teacher and we all thank him. The banquet auction (EOG) collected about 90K and the POP auction got 30K versus 70K and 80K, respectively for the Richmond 2008 Symposium.

Again some reminders:

Our annual picnic will be at Sid and Penny Mace's home in Reedville in August.

We have scheduled two top demonstrators for April and May of next year, so it's not too soon to start planning to take some time off for these 3-day demos. Watch for more details.

We have a great new home for our meetings and will be forever indebted to Ray Deyo for his generosity in providing ample room for us to move forward in the development of a bigger and better Club, now officially known as **THE RICHMOND WOODTURNERS!**

Club Treasury has \$9700, but we still have receipts for the video equipment and other things to reimburse.

Lee Scarbrough

Stamp

Here

## FOR SALE, BUY, or TRADE

Ray Deyo offers a 10% discount on non-power tools and supplies on meeting nights at Woodcraft for members only. Another very good reason to join us every month!

### **Green wood shrinkage.**

Wood shrinks more tangentially (perpendicular to wood grain) than radially (perpendicular to wood grain and annual rings) and not much at all longitudinally (parallel to wood grain). The amount of shrinkage varies with the species of wood. Hardwoods like beech, oak, and sweet gum shrink the most tangential by 10- 12 % and softwoods like pine about 7%. Imported woods shrink less; about 7 % is the maximum. On the average wood shrinks tangentially twice as much as radially. Once dry, woods will change their indoor moisture content 1% per every 5% change in relative humidity. *The Workshop Companion*

### **SANDPAPER ORDER**

Dan will be sending out an order for sanding disks to Industrial Abrasives, soon. In the past, they have given the club wholesales prices. There is no guarantee, but I expect that 2" disks will be \$3.75/pack and 3" disks will be \$5.00/pack, all plus tax and shipping. Check it out at the site below and let me know this week if you would like to be included.

[http://  
www.industrialabrasives.com/  
zencart/index.php?  
main\\_page=index&cPath=201\\_82](http://www.industrialabrasives.com/zencart/index.php?main_page=index&cPath=201_82)

Please be specific with size and grit desired.