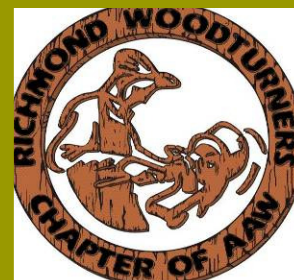




Richmond Woodturners' Newsletter



Next Meeting:

@Woodcraft, old Circuit City Plaza, 9862 West Broad St (Rt. 250W), Richmond, on the third Thursday of every month, 6:30PM. Refreshments provided.

MAY 19

Editor: Betsy Mack

bcmack@comcast.net

Program Schedule:

May: Barbara Dill

June: Platters-Deane Cox

July: TBA

Challenge Schedule:

May: Natural Edge

June: Open

July: Platters

Inside this Issue

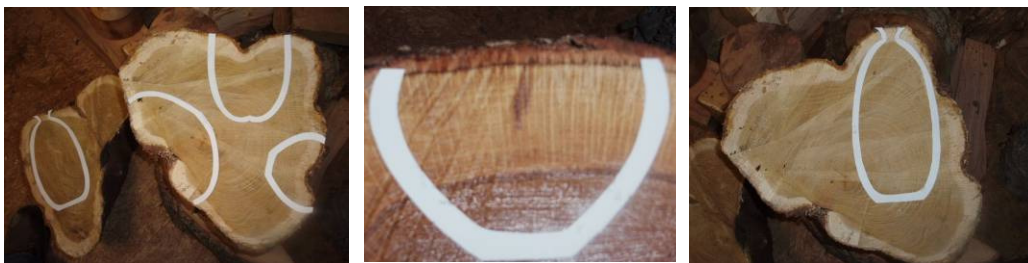
Meeting Vibrations	2
Challenge & Show/Tell	3
Upcoming Shows	2
Visitors & New Members	5
Officers & Club Information	5
AAW / VA News	5
For Sale, Buy, or Trade	back

May 2011

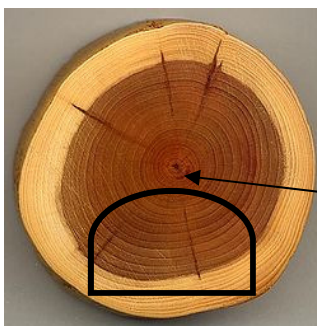
www.richmondwoodturners.org

Mounting the Natural Edge Bowl Blank by Aage

1. **Visualizing your bowls and vessels.** Using paper templates allows you to try out various designs on the blank at hand.



2. **Centering the grain at the bottom of the bowl.** Keep in mind where the pith is, if you want the grain concentrically centered at the



bottom of the bowl. The tailstock is used to center the grain.



Pith

3. **Aligning the blank** With a blank like this one, I insert a spur drive in my chuck—I'm lazy—in order to reach into the center recess. I pin the blank between the spur and the tailstock, rotate it and adjust the tailstock until the high points and the dips line up reasonably well. I put my hand on the tool rest and use my finger to align the tips and dips.



[Continued on page2]

June 24-26, AAW Symposium Saint Paul, MN

November 4-6, NC Woodturning Symposium, Greensboro

Shows Coming In VA:

Our member, **Earl Dunning**, passed away on April 30th, after a courageous battle against brain cancer. He was a delightful man to know for such a short while, for most of us, and we will miss him dearly. In lieu of flowers, it is requested that donations be made to Immanuel Baptist Church Building Fund or Immanuel Baptist Church Mission Fund. Richmond Woodturners will make an appropriate donation to both funds. Respectfully, Lee

Meeting Vibrations

Dick would like to remind members that club dues are way past due.

Lee & Ray gave a demo to the Forest Department employees. A class for adults will be held Monday, June 13, 1-3pm at Holiday Lake 4-H Camp. Will need up to 8 turners for hands-on instruction for kids. We need several more volunteers. For more info contact Ray or Lee.

Club picnic is set for September at Sid & Penny Home

Thank you all for bringing food to the meetings. Thank you Aage for the demo write-up

[Aage from 1] 4. Grain and color distribution Mark the pith line on plain- sawn blanks to balance the grain. In the case of quarter-sawn blanks (below) all grain runs parallel. Here it's the balance between heartwood and sapwood you might want to consider.



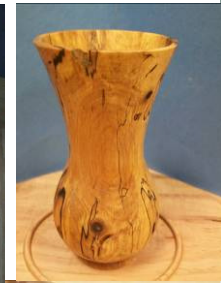
5. Turn the Bowl
Adjust the top of the blank so that high points line up with high points and low

points with low points. Often you'll have to settle for a compromise. Turn a tenon, with a ridge. Unless you're left-handed, you should shape as much of the outside as possible before you mount it in the chuck jaws. Finish-turn the outside and sand. Remember to turn from chuck to rim on the outside of cross-grain bowls. Learn to turn left-handed lowest down. Start in the middle. Move cut by cut towards the edge. Watch out. If you cut the top wing too thin, you can never fix it. Easy does it. The most critical moment comes when you cut the final width of the rim. The bevel of your flute must point in the exact direction you're going to cut. If not you can ruin the rim. Practice on your blank before you get to the rim. If you do it right, you'll cut straight. (Of course, you can always use a parting tool to establish a groove for the gouge but a gouge always cuts cleaner.) Turn the finish-turned bowl around and pin it against a jam chuck. A slightly concave, blunt-nosed jam chuck (see below) provides a larger contact area than a rounded one. It makes the bowl run very close to true when you turn the bottom area. Your wings are going to flex as soon as they're turned. Get the thickness right; you can't go back and touch them up without inviting disaster. Bowls wider than 10" are easier to do than smaller ones. Small bowls with depth represent a challenge when it comes to doing the bottom curve because of tight access. You

need a second gouge ground to that angle, or a Hunter tool or a scraper.



SHOW & TELL



Things: Platters, bowls, natural edge bowl, pens, Christmas Ornaments, vase, lidded bowl, puzzle lock, funnel, magnify glass, eggs, train, trucks, chair, egg chuck, lidded box

Wood: spalted wood, cherry, walnut, segmented blank, maple, Banksia Pod, bocote, dogwood, antler, ambrosia maple, elm, corian, mahogany, maple burl, mulberry



WOODCRAFT COMPETITION

Best of Show Professional: Barbara Dill

Best of Show Adult Experienced: Deane Cox

Best of Show Adult Novice: Robert Gundel

Best Carved Turning: Jim Bumpas

People's Choice: Roland Sheneman



First Place Professionals:

Dug Campbell – Bowl

Barbara Dill – Spindle

Jim Bumpas - Hollow Form

Barbara Dill – Free Form

Dick Hines – Lidded Box



First Place Adult Experienced:

Deane Cox – Spindle

Deane Cox – Hollow Form

Deane Cox – Bowl

John Wilmer –Lidded Box

Jack Hayes – Mandrel



First Place Adult Novice

Roland Sheneman – Free Form

Robert Gundel – Bowl

Robert Gundel – Hollow Form



Ray thanks the club for its support and demonstrators during the day.

Officers for 2011

- President: Dick Hines (804-966-5204)
rdhines@hughes.net
- 1st Vice President: Don Hart (804-530-3992)
- 2nd Vice President: Jerry Fisher (540-895-5287)
- Treasurer: /Bulk Orders Matt Baker (804-440-3581)
- Secretary/Newsletter Betsy Mack (804-730-8324)
bcmack@comcast.net
- Librarian: Aage Rendalen (804-261-9160)
- Membership: Danny Luttrell (804-271-4799)
- Website Barbara Dill (804-749-8565)
- Past President Board Members: Lee Scarbrough (804-712-6676)
 Mike Lane (804-932-5149)
 Jim Bumpas (804-526-2873)
 Dan Luttrell (804-271-4799)
 David Sterling (804-755-6087)

Dues: \$25 individual, \$35 family & \$15 student. Member applications are available upon request at meetings or via email.

Library: Contact the club librarian to borrow tapes and other publications related to woodturning for only \$2 per month. List is on the website. Lose it and you bought it.

Newsletter Entries: If you have tips, news, "For Sale" or a newsletter entry (250 words max and no embedded photos; send photos separately as attachments) please send it to the Editor for publication in a future newsletter. Must be received by 7th of each month to make the most current newsletter.

Website: www.richmondwoodturners.org Updated regularly and contains links to other VA clubs.

AAW Membership: Dues are \$48 per year. For this, you receive 6 issues of "The American Woodturner" (a \$30+value), a great resource directory (over 450 pages), a huge annual symposium, personal grant opportunities, third party liability protection, and much more. If you are the least bit serious about woodturning, you can't afford to miss out on all this.

Visitors / New Members:

New Members: Bill Walters (# 119)

John Anderson (# 118)

1st Time Visitors:

Dan Moore

June Snack Reminder

44	Strang	Ice -10lb bag & cooler
45	Duffy	Two 2-liter diet drinks
46	Hammer	Two 2-liter regular drinks
47	Jenkins	Two 2-liter non caffine drinks
48	Cox	Sweet snacks(cookies, etc.)
49	Hayes	Sweet snacks(cookies, etc.)
50	Fisher	Sweet snacks(cookies, etc.)
51	Harvey	Salty snacks(P-nuts, etc)
52	Percell	Salty snacks(P-nuts, etc)
55	Tyrrell	Salty snacks(P-nuts, etc)

Beverage & Snack Roster for MAY

33	Thomas	Ice -10lb bag & cooler
34	Dill	Two 2-liter diet drinks
35	Rendalen	Two 2-liter regular drinks
37	Mack	Two 2-liter non caffine drinks
38	Tingle	Sweet snacks(cookies, etc.)
39	Bradford	Sweet snacks(cookies, etc.)
40	Mosser	Sweet snacks(cookies, etc.)
41	Cox	Salty snacks(P-nuts, etc)
42	Cox	Salty snacks(P-nuts, etc)
43	Marstall	Salty snacks(P-nuts, etc)

Chuck Moser collaborating with his wife Apr 30 at the Sun Spots Annual Art Glass Show in Staunton



Stamp

Here

FOR SALE, BUY, or TRADE

Ray Deyo offers a 10% discount on non-power tools and supplies on meeting nights at Woodcraft for members only. Another very good reason to join us every month!

FOR SALE

Jet 650 CFM Dust Collector with Bag Filters, 1 HP, Model DL-650 (?) older version of the DC650 Woodcraft sells. 2 stage with trash can for larger pieces so only dust goes into bag. Asking \$75. Buyer will have to take apart system, including 4" plastic pipe on wall, any accessories, chips and dust away, i.e, broom clean area.

Shop Vac Air Cleaner. Compact & portable; filters dust as small as 5 microns, 235 Cubic Feet Per Minute. 25" long and 13" diameter weight 15 pounds. Used very little, \$35.

Call or e-mail me for locations (West End, near St. Marys Hospital). Prefer e-mail because I can't talk well anymore.

Jim Biggers 804-282-9127

jimbiggers@verizon.net

I am going to **sell** some of my woodworking equipment in anticipation of soon moving to a smaller home.....jointer, sander, router & and table, band saw, table saw w/ extension.

Anyone interested please email me with questions. Karl Wagner

karwag@earthlink.net

Martin Tree Service Company @Hanover
free wood

\$25 per year and you can come pickup
tree cut off all year

Need more information like phone number!!! Let me know

PEN TURNER'S GROUP

2nd Thursday of each month 7-9pm

No fee. Just show up & learn something new about pens.