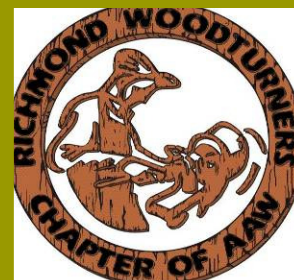




Richmond Woodturners' Newsletter



Next Meeting:

@Woodcraft, old Circuit City Plaza, 9862 West Broad St (Rt. 250W), Richmond, on the third Thursday of every month, 6:30PM. Refreshments provided.

May 17

Editor: Betsy Mack

bcmack@comcast.net

Program Schedule:

May: Texturing & finishing

June: Question & Answers

July: TBA

Challenge Schedule:

May: Aussi Burl

June: Finishing

July: TBA

Inside this Issue

Meeting Vibrations	2
Challenge & Show/Tell	3
Upcoming Shows	2
Visitors & New Members	5
Officers & Club Information	5
Competition Photos	5
For Sale, Buy, or Trade	back

May 2012

www.richmondwoodturners.org

Australian Burl turnings with Jim Syvertsen

Jim is a turner of Austrian Burls. After a career in the Navy he settled down in Chesapeake with his Nova lathe, tools, burls and trailer. He only turns what he can't sell (www.AustraliansBurls.com), so some are quite small and they sell better at shows (burl cost \$\$\$\$ and the economy sucks).

First he glues up the burl on a waste block using 2 part epoxy (CA can't take the heat). Rough turn & hollows the piece then into his home made kiln (refrigerator with a 60w light bulb, keeps a temperature of ~ 100° F), glue block & all for 3 weeks. When they come out, the hole is bigger and the turning is oval. So round up the outside, then head back to hollowing. Jim makes his own scrappers from drill rod (heat, bend, harden & sharpen). Small burls need really small scrappers.

Next, Jim cuts an insert (contrasting wood) to fit the burl's entry hole. Under cut the base for a good fit. Epoxy it into the hole, use the tail stock to hold it in place. Shape to remove any epoxy showing. Drill a center hole for the finial's tenon.

[Continued on page 2]



Shows Coming Out Of VA:

June 8 –12: AAW Symposium, San Jose', CA

Shows Coming In VA:

Sept 15-16: VA Turners Symposium, Fishersville

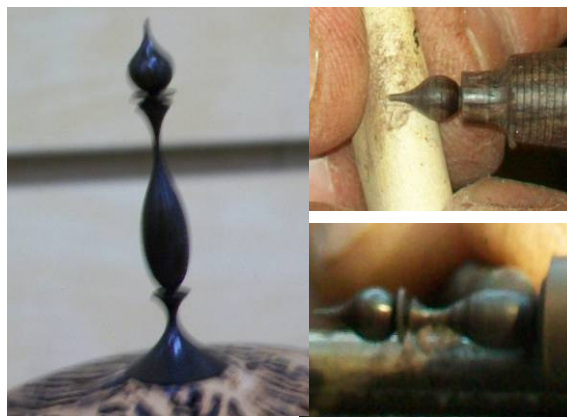
Sept 14-16: Field Days of the Past, Goochland

June Program: Please bring one of you turnings made between now and then to our June meeting. In place of the usual demo format, we will spend the evening presenting and discussing the turnings brought by our members. This will basically be an expansion of the format we use for our monthly challenge. We would like for everyone to bring a turning and to participate in presenting your work. You will have the opportunity to talk about your turning and to ask questions and get feedback from other members. If there are problems or questions that you have, be sure to bring them as well.

Pay your dues before Danny sends out the nasty gram



[Demo from page 1]
The finial is made from African blackwood. This wood is oily so wipe it down with lacquer thinner. Turn the finial with as little pressure as possible and make it flow into the base inlay. Sand to #600 grit. Roll up the sand paper and let the curve of the paper do the work. Seal with semi-gloss lacquer. Jim mounts his turning with museum putty. It stays soft and pliable.



He arrived with his whole set up. More lights attached to a lathe than ever seen before (must be over 50 years old!). He also doesn't like to straddle a lathe while hollowing, so he just rotated the head stock a little to the outboard. Also having a Nova lathe, I tried that for the first time. I like it better than sitting on a rail.

Treasures report ~\$9000

Meeting Vibrations

Barbara Dill was a judge for the AAW Multi-axis turning challenge. She will be in Texas for their turning symposium.

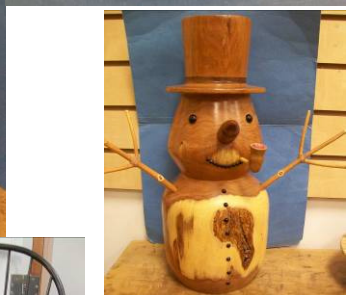
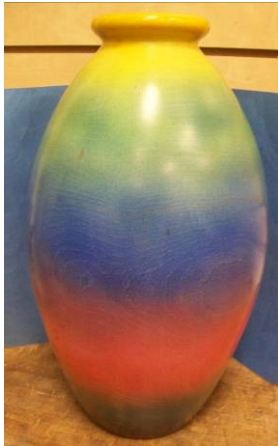
May – Brien-Marx Noble- Finishing; **June** – Show & Tell; Questions & Answers about your turning; **Sept** – Bob Rosands

Suggestion: We have a challenge turning each month based on the previous months demo and we have Show & Tell at the same time. There is no incentive or enough time for most to attempt the challenge. It has been suggested we set up a quarterly challenge with a separate prize drawing. More time and another chance to win might inspire more to try it. (from reading other club's newsletters this seems viable). Have it set it up in time for next year: Jan, April, July, Nov. Finish all 4 challenges: get another chance for a prize. It can be from a previous demo just as long as members have 3 months to complete it. Member comments are requested by the next meeting.

Lee wants everyone to know Bus Seymour is just back from Florida and is taking orders for laser-cut RW name badges. Does pens too. See him at meeting.

He has a contact who has a sawmill in east New Kent county and charges \$50/hr for his services. Really nice Woodmizer with all bells & whistles. See Lee at meeting,

SHOW & TELL



Things: Bowls, segmented things, bracelets, pepper grinders, snowman, lidded box, off center bowl, ants, big bowl, goblets, natural edge bowl, tools, pens, chair, stool

Wood: Maple, cedar, beech, coffee-bean tree, holly, cherry, sycamore, walnut, mesquites, oak, apple, glass beads

Turning Competition @ Woodcraft



The 2012 Woodcraft Turning Competition was smaller than last year by 21 entries, but this was primarily in the youth class because the Chickahominy Middle School program had changed a bit this year. Adult entries were strong. Below is a recap of the Best of Show and First Place winners. This list is a mere fraction of the total number of overall ribbon winners with many members of the club once again earning the prestigious title of "Award Winning Turner". Woodcraft would like to thank everyone who participated this year. The competition is designed to help perpetuate wood turning overall and the high quality of entries certainly accomplished that. Many people were very impressed with what they saw! **BEST OF SHOW WINNERS:** Dave Beldyk, Mark Bowman, Jim Bumpas.

FIRST PLACE WINNERS; Barbara Dill, Mike Lane, Robert Gundel, Bob Silksensen, Rolland Sheneman, Del Camp, Alton Bradford, Dug McElwaine, Sherman McLaughlin, Bruce Robbins, Brendon Obrien and David Gahimer.



Officers for 2012

President: Dick Hines (804-966-5204)
richard.hines45@gmail.com

1st Vice President: Jim Bumpas / Lee Scarbrough

2nd Vice President: Jerry Fisher (540-895-5287)

Treasurer: /Bulk Orders Matt Baker (804-440-3581)

Secretary/Newsletter Betsy Mack (804-730-8324)
bcmack@comcast.net

Librarian: Aage Rendalen (804-261-9160)

Membership: Danny Luttrell (804-271-4799)

Website Barbara Dill (804-749-8565)

Past President Board Members: Lee Scarbrough (804-712-6676)
 Mike Lane (804-932-5149)
 Jim Bumpas (804-526-2873)
 Dan Luttrell (804-271-4799)
 David Sterling (804-755-6087)

Dues: \$25 individual, \$35 family & \$15 student. Member applications are available upon request at meetings or via email.

Library: Contact the club librarian to borrow tapes and other publications related to woodturning for only \$2 per month. List is on the website. Lose it and you bought it.

Newsletter Entries: If you have tips, news, "For Sale" or a newsletter entry (250 words max and no embedded photos; send photos separately as attachments) please send it to the Editor for publication in a future newsletter. **Must be received by 7th of each month to make the most current newsletter.**

Website: www.richmondwoodturners.org Updated regularly and contains links to other VA clubs.

AAW Membership: Dues are \$48 per year. For this, you receive 6 issues of "The American Woodturner" (a \$30+value), a great resource directory (over 450 pages), a huge annual symposium, personal grant opportunities, third party liability protection, and much more. If you are the least bit serious about woodturning, you can't afford to miss out on all this.

Visitors / New Members:

1st time visitor: Porter Knight

New Members: Jon Leggett, Myron Strong, Bonnie Cross, Joe & Person Batitto

Beverage & Snack Roster Reminder

34	Dill	Ice -10lb bag & cooler
35	Rendalen	Two 2-liter diet drinks
36	Weber	Two 2-liter regular drinks
37	Mack	Two 2-liter non caffeine drinks
38	Tingle	Sweet snacks(cookies, etc.)
39	Bradford	Sweet snacks(cookies, etc.)
40	Mosser	Sweet snacks(cookies, etc.)
41	Cox	Salty snacks(P-nuts, etc)
42	Cox	Salty snacks(P-nuts, etc)
43	Marstall	Salty snacks(P-nuts, etc)

June Snack Roster Reminder

44	Strang	Ice -10lb bag & cooler
45	Duffy	Two 2-liter diet drinks
46	Hammer	Two 2-liter regular drinks
47	Jenkins	Two 2-liter non caffeine drinks
48	Cox	Sweet snacks(cookies, etc.)
49	Hayes	Sweet snacks(cookies, etc.)
50	Fisher	Sweet snacks(cookies, etc.)
51	Harvey	Salty snacks(P-nuts, etc)
52	Percell	Salty snacks(P-nuts, etc)
55	Tyrrell	Salty snacks(P-nuts, etc)

Richmond Wood Turners
5451 Spotslee Circle
Mechanicsville, VA 23111

Stamp
Here

FOR SALE, BUY, or TRADE

Ray Deyo offers a 10% discount on non-power tools and supplies on meeting nights at Woodcraft for members only. Another very good reason to join us every month!

For Sale:

JET 1236 lathe with stand tools, faceplate and chuck. Like new. \$550

Call Jack 235-0889

FOR SALE Nova 16-24 Lathe

only 5 months old, purchased new from woodcraft. Comes as it did brand new, no additional extra goodies to go with. If you are not familiar with the specifications of that lathe the Teknatool website or woodcraft will give you any info or spec's you might need. I'm asking \$900 for the lathe seeing the condition is great, it's basically a new lathe still with warranty but a lot cheaper.

Teknatool cast iron stand, brand new never used. I believe it fits all their lathes. I'm asking \$225. Please contact me on my cell phone **804-437-4284** with any questions. I live in Chesterfield.

Thanks Jon Leggett

Jim Bigger's (a member) needed a table built to get his wheelchair under. Bob Tingle stepped up.

