

Richmond Woodturners

Newsletter August 2019



Meeting of the Richmond Woodturners 7/18/19

Welcome New Members/visitors and guests:

New Members: James Carbone, Gum Spring; Steve Reilly, Scottsville

1st Time Visitor: Bob Francis, North Chesterfield

Old Business:

Anti-Fatigue mats still available.

Pick up your ordered Club shirts from Steve Schwartz/Chick Kleman.

State Fair again, 9/27-10/6. Volunteers needed, see Dan L.

AAW Symposium in NC. July 11-14.

Upcoming Demos,

Today – Max Brosi, multi-axis

August will be Avelino Samuels.

Aug 15th regular meeting

Aug 16th hands on day and 6-8 folks, at \$100 each. May still be room ,ask Jim Bumpass.

Aug 17th will be an all-day demo day limited to about 30-35 folks, at \$30 each.

Sept – Hands On! Multiple stations

Oct – Bruce Robins – things that spin

Quarterly Challenges,

October will be “Things with feet”

December will be Tops that spin

Other Business:

Resource Lending Library being updated

Purchase a new case?

Show and Tell!

In This Issue

Meeting Notes	1	Financial Report	11
Demo by Max Brosi	2-4	Quarterly Challenge List	11
President’s Letter	5	Richmond Chapter Info	
Show and Tell	6-7	& Where We Meet	11
Board Meeting Minutes	8-9	Tools to Loan Out	12
Board Officers	10	Woodcraft Info	13
Snack List	10	For Sale - Some Wood	13
Demonstration Schedule	10		

A Demonstration by Max Brosi



About the Artist:

After graduating from Furniture Design and Manufacture, the Furniture College, Letterfrack, Co., work expanded to small boatbuilding and hollow wooden surfboard construction. For the past several years Max has specialized in sculptural forms, turned, carved, and sand-blasted from green Oak and Spruce, often in combination with rusty steel elements. His work focuses heavily on the tension between stark geometric forms and the natural distortion of green wood as it dries.

Geometric multi-axis tube forms are my woods, my comfort zone, and what people expect to see from me. I strive to make these as visually simple and minimal as I can. Since last summer I have concentrated on simpler forms again, the hollow form, stepping out of my personal woods, where clean flow of line, proportions and volume are paramount. Certainly nothing new or ground breaking, but a personal challenge to create tactile, balanced, and calm pieces that carry the same design language in terms of natural and honest surface and texture as my other work.

Since 2014 Max's work has earned numerous Irish and international accolades including winning the woodturning category of the RDS (Royal Dublin Society) National Craft Awards in Ireland and having received an Excellence Award from the AAW (American Association of Woodturners). In 2016 his work appeared in a special Collectors of Wood Art exhibit at SOFA Chicago, "Why Wood?".

In 2017 Max took part in the International Turner's Exchange (ITE) at The Center for Art in Wood in Philadelphia. His work is included in private collections in Great Britain, Germany, Switzerland and the USA.

From: <https://www.icollector.com/item.aspx?i=30025788>

Home: <https://www.facebook.com/maxbrosiwoodturning/>

The inspiration for the piece came about because he collected whale bone as a child living on the East coast of Ireland. He liked the shape so much he designed an art piece emulating it. The piece he turned during the demonstration was called Whale Bone. 85% of the piece is turned, the rest is carved. Max mentioned that the process of making some of his objects usually starts with a sphere and most of the demo use used to make the sphere. He started by mounting an octagonal cylinder on the lathe which was already cut out prior to the start of the demo. He marked the cylinder into 12 equal sections. These he used to turn the sphere freehand— the Max Brosi way as opposed to using one of the many jigs available.

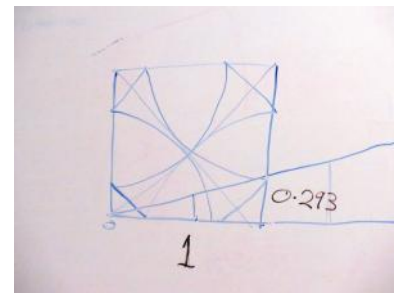
The Oak block of wood was roughly 12 inches across (to turn a 10-inch sphere) by 14 inches long (extra length for mounting tenons). Noting that that Oak is his favorite wood, he entertained with several asides about his experiences with his oak sources. Such as "There are more Oak logs in Henrico County being recycled into mulch than in all of Ireland!!" The rectangular block was ripped sawn to remove the "corners" to save time turning it into a cylinder.

The block of wood was mounted between centers in preparation of marking the various cuts and turned into a cylinder and tenons were made on each end. Normally he uses an indexing system in the lathe to divide the equator of the cylinder into 24 equal segments. Since our club lathe didn't have an indexing system, he drew a circle on the end of the block, and then divided it into 12 equal segments. Another circle was drawn on the cylinder at midpoint – to become an equator of the sphere. The 12 marks of the end circle were projected onto the end-side of the cylinder and a line was from each of these marks to the midpoint circle. These 12 lines were divided into six equal line segments. Each of the segments designated where a flat angled surface is to be turned on the cylinder. The first flat-angled cut is at the middle of the six points. It may help to picture that the cross-section of the cylinder before this cut is a rectangle very near square shape. After this cut the cross-section is an octagon.



Mounted and ready to start to make it into a cylinder

Max penciled lines which bisect the spaces that form the octagon shape. The second and third cuts are made on the ridges formed by the first cut. The next cuts were made on the ridges of the previous cuts. After each series of cuts, the shape of the cross-section was an eight-sided figure, then a sixteen-sided, then a thirty-two sided.



Max stated that these cuts are similar to that of a chair bodger who on a shave horse “turns” a long rod of wood that was split from a tree into a cylinder with a drawknife and spokeshave. He does this by first making the rod from a 4-sided into an 8-sided one, then into a 16-sided rod, then into a 32 sided one. At this point it would be trimmed further and considered cylindrical. And, if this were to be a chair leg the bodger would continue shaping it on his pole lathe with coves and beads.

A little geometry to show how to form an octagon from a square cross-section – where to cut the first two bevels

At this point, Max removed the sphere, cut off the remaining tenons and remounted using the multi-axis technique, between centers. He then on the equator of the sphere cut the first cove on the “top” or new center; then the sphere was remounted and a second cove intersecting the first cove off 15 degrees in two places. The sphere was remounted again this time on a scroll chuck in preparation of forming a hollow area. A hole was drilled with a large forstner bit and was hollowed with a fairly large opening formed. The final process consisted of using a grinder to shape the transverse (small bony projections that project laterally from the left and right side of each vertebrae). The definition comes from www.merriam-webster.com and www.spine-health.com. He left the piece unfinished for Barbara Dill to complete.





AAW | AMERICAN ASSOCIATION OF WOODTURNERS

In his article, "Small Shop Space Savers," from the October 2012 issue of *American Woodturner*, Mark Evans explains how he conserves space in his shop.

SMALL SHOP SPACE SAVERS

Mark Evans

I took up woodturning as a hobby just two years ago, and like many others, I don't have much room in my workshop. To find a place for all the new equipment, I made my lathe into a toolbox.

I used precast shelf brackets to install a shelf, made of 2 x 4s, between the legs of the lathe. A box fits on top of the shelf into which I put 150 lb of sand to help stabilize the lathe. On top of that box, I attached a box that has two drawers where I store my dust helmet, chuck jaws, and accessories.

Over the top of the box with drawers I attached a hinged lid to the bottom of the lathe bed. The angled lid directs the wood shavings onto the floor for easy cleanup. In the space under the lid I store extra-long and seldom-used tools, just about everything I need is stored under the lathe. To move the lathe, I jack it up with my motorcycle jack and push it.

On the front of the lathe, I attached a piece of 1/2" (6 mm) plywood so hang commonly used tools. It's

angled so that when I turn an out-of-balance piece, the tools do not fall off the hooks.

To hold spar drives and other accessories, I made a bracket from 3/4" (5 mm) aluminum and attached that to the lathe's headstock.

Grinder stand

I had about 6" of wall space left and my cabinets were almost full. I did not want to mount the grinder onto my bench top, so I decided to mount it on the wall behind the lathe. When the lathe is not in use, I move it in front of the grinder and there is still room to park a car.

The grinder shelf is a 2' x 2' (5 cm) frame with a 1/2" (13 mm) plywood top. I used two 3/8" (90 mm) door hinges and attached them to a 2 x 4 that is securely mounted onto the wall. A sturdy wooden leg supports the shelf in its raised position. When folded down, it protrudes about 16" (40 cm).

When swung out, the grinder is about 4" (1.2 m) off the floor, which is just the right height.



Drawers and a shelf are tucked under the lid.



I can move the lathe using my motorcycle jack.



Tools hang on plywood on the front of the lathe.



A grinder folds down out of the way when not in use, and can be easily lifted into position when needed.

Letter from the President – August 2019

Please welcome our two newest members: Steve Reilly and James Carbone joined our ranks last month. Once again, Richmond Woodturners were treated last month to another great live demonstration, this time by Max Brosi having just come away from demonstrating at the AAW Symposium at Raleigh. I happened to overhear a few of our Symposium attendees mention regretfully having missed Max's demo there only to find Max coming to our meeting to offer an encore presentation. No need to delve deeply there as his turning prowess is covered elsewhere in this newsletter, except to offer a huge thank you to Barbara Dill, Izumi Miller and Jim Bumpas for their logistical and editorial efforts.

This month we'll have the honor of hosting Avelino Samuel visiting from the US Virgin Islands for three days to include our meeting night demonstration, a Friday hands-on day, and a Saturday in-depth demonstration. .. yet another rare treat for our membership.

Your duly elected board members are currently working on a few future items of interest to include our quarterly challenges for next year and a few new concepts to keep things interesting – To be announced shortly after the sanding dust settles. Thanks to everyone who continues to support our club. As members, all we see are the meetings. There are a lot of efforts behind the scenes to make it all happen.

Our next and possibly last outside event for the year will be our annual jaunt to demonstrate at the Virginia State Fair. At last count, there were still a few demo slots open. It's an excellent opportunity to show off your work, learn yourself, and amaze the fair-goers. It is not a demo event just for experienced turners. A few quick and easy items to turn on-site such as spinning tops, simple bowls or Christmas trees will make the kids smile. Two Jet Minis will be set up. Fair admission and parking is at no cost to you. If you'd like to try your hand at it, see Dan Luttrell who has things well under control once again. Consider wearing your shiny new club shirt and/or name tag and show your pride.

I believe there still are a few previously ordered club shirts still not picked up. Please see or contact Steve Schwartz to settle up as soon as possible. We still do have a few extra polo shirts for anyone who still wants one . . . Large and XL only.

Enjoy and digest the balance of the newsletter. Bob Marchese and Izumi Miller put a lot of effort into a great newsletter. Thanks to Tim Warren for his photography skills. Please remember to fill out a photo tag for your show & tell items so that we can accurately identify your work.

We'll see you at the meeting.

Keep your tools sharp, yourself safe and let the chips fly.

Bill Buchanan

Safety tip of the day: Count your finger tips before you start a project. Count your fingers again while the glue dries. Those numbers should match exactly!

Show and Tell



Royal, Wood, Bubinga & Maple, Lacquer & Yorkshire Grit, 11" X 4"



Chuck Mosser, Holly, Paint & Dye



Robert Gundel, Maple Burl & Walnut, Curly Maple Finial, CA, 10" X 9"



William Talbot Junior



Bob Silkensen, Zebra Wood, Off Centered



David Bushman, Holly, Milk Paint & Varnish



Cody Walker, Cherry, Walnut Oil, Basket Weave Decorative ring, 10" X 4.25"



Steve Kellner, Bradford Pear, BLO, 12" X 6" dia. More Hollowing Practice

Show and Tell



Tim Warren, Poplar, Lacquer, Friction Polish,
Base: , Cherry, Ebony



Chuck Horton, Multi-Colored Box



Bruce Robbins, Tiger Myrtle,
Vera & Tape, Vory



Sherry Neff, Poplar & Oak,
White Paint



Bill Buchanan, Unknown Species, Danish Oil



Terry Moore, Maple & Walnut ,
60"



Meg Turner, Olive Wood, Wax,



Meg Turner, Maple, Wax

Minutes - Richmond Woodturners Board meeting August 8, 2019

In attendance: Bill Buchanan, Jim Bumpas, Cody Walker, Georgia Wood, Chuck Bajnai, Dan Luttrell, Bob Marchese, Stan VanDruff, Lee Scarbrough, Ray Deyo, Jared Parker

Reviewed board nomination dates. Four upcoming for 2020. No changes

Bylaws - No modifications needed

Financial Report -Currently \$7301.06 balance.

- How should this be published to membership?

--Request came from membership for a report.

-- for the monthly meetings, 4 lines. - opening balance, expenses, additions, closing balance

---request that board get an itemized breakdown of expenses for the quarterly board meeting.

----discussion centered

Motion by Stan VanDruff, Chuck Bajnai second: Every month in the newsletter a basic budget report reflecting money in and money out will be published in the newsletter monthly. A detailed financial report will be provided twice a year. Once in the July Newsletter and once in the January Newsletter.

Voted: Unanimous Approval

Ray Deyo requested time to discuss the need for the board to be progressive and aggressive towards growing our club's capabilities. Specifically, we need to develop a 5-year plan. From this plan, we should look at updating our dues to reflect our goals. He observed that our dues are very low especially considering inflation. He suggests that we need to be thinking about the future and develop a 5-year plan.

Motion Bob Marchese, 2nd by Bill Buchanan: This group should gather within 45 days to discuss what objectives we want to achieve for a 5-year plan.

Discussion: Tentatively September 26th. Week following our September meetings. All Board members

Voted: Unanimous Approval

Motion Bob Marchese, Jim Bumpas Second: Approve spending of \$300 for AV system components.

Voted: Unanimous Approval

State Fair: 37 of 40 shifts filled.

Action Item: Bill to talk with Bruce Robbins about Club promo cards

Motion Bill Buchanan, 2nd by Bob Marchese: Purchase proposed cabinet: Replacing the existing cabinet with a new one. Cost of new Cabinet is \$593.

Tabled: Discussion surrounding a library cart. Ray wants to see how much it will cost to build.

Demonstrations: We need someone to set up the room, collect money on Saturday.

--September demonstration: Jim has what he ne+-eds.

Minutes - Richmond Woodturners Board meeting August 8, 2019 - Continued

Quarterly challenges: The Following are the quarterly Challenges for 2020 were selected by the Board.

1st Quarter - Purely Sculptural

2nd Quarter - Natural Edge

3rd Quarter - Musical Instruments

4th Quarter - Rude Osolnik

Voted on Unanimously

Newsletter - discussion related to show and tell photos.

Mentoring program - table until AAW provides guidelines .

Social Media - Facebook.

Action Item: Bill Buchanan needs to contact Charlie Hamilton to add an additional Admins with current two admins / moderators inactive.

Charity Program we'll be supporting in 2020

Motion Bill Buchanan, 2nd Bob Marchese: We will support Beads of Courage Outreach Charity for our 2020 Challenge. Cody Walker will head up.

Vote: Approved

Respectfully Submitted,
Jared Parker



2019 Mid Atlantic Woodturners Association Symposium

Friday, October 4, 2019 at 7:00 PM EDT

-to-

Sunday, October 6, 2019 at 3:00 PM EDT

Many of us just returned from the AAW Symposium in Raleigh, NC and saw some wonderful demonstrators, had the opportunity to add to our collection of tools and supplies, and learned new skills with old and new friends. This is an opportunity to continue building on what you saw in Raleigh with an all-star group of demonstrators, none of whom held sessions at the AAW show. www.mawts.com

Board Officers

Bill Buchanan - President
Jim Bumpas - Vice President
Bob Silkensen - Secretary
Cody Walker - Treasurer

Directors

Dan Luttrell – Membership Director
Georgia Wood – Activities Director
Stan VanDruff – Information Director/Webmaster
Chuck Bajnai – Resource Director
Ray Deyo – Past President
Lee Scarbrough – Past President

Committee Chairpersons

Jim O’Hanlon – Turning Competition
Jared Parker – Audio/Video
Charlie Hamilton – Social Media
Meg Turner – AAW Women in Turning Liaison

Newsletter Staff

Bob Marchese – Editor
Izumi Miller—Writer
Tim Warren—Photographer

August Snacks & Drinks

Providers

Georgia Wood Ice/Cooler
Joanne Fisher 2liter Coke
John Daniel 2liter Pepsi
John Roberts 2liter Diet Coke
Joseph Boyle 2liter Caffeine Free Soda
Karl Glasscock Chips
Kathleen Wright . . . Cookies
Katherine Harris . . . Sweet Snack
Knavey Moyher Salty Snack
Larry Yancey Salty Snack

Please Text Georgia if you cannot bring
assigned snack @ 804-525-8291

Demonstration Schedule

August 15: Avelino Samuel. In cooperation with Woodcraft and Tidewater Turners. Presentations at the Club meeting on Thursday night. There will be all day sessions on Friday and Saturday – format is being developed.
September 19: Instruction by several experienced turners with hands-on opportunities for members
October 17: Bruce Robbins. Tops, basic to advanced.
November 21: Deane Cox. Tops from the master. May include some hands-on instruction by other volunteers.
December 19: Holiday Party and Tops Competition
January
February

Financial Report

Previous Balance \$7,101.40
Income \$725.00
Expenditures. \$1,181.89
Current Balance. \$6,644.51

Changes in the balance are associated with collection of membership dues, payment of a demo fee, and purchase of show and tell gift cards.

Quarterly Challenges

The Challenges are regularly scheduled for the third month of each quarter (March, June, September, and December). Entries will be placed on a table separate from the Show-n-Tell table.

3rd Quarter, 2019 – Something with feet or handle

4th Quarter, 2019 –Tops

2020 List— see Board Meeting Minutes above

Richmond Woodturners Info

Our club meets on the third Thursday of each month at the Richmond Woodcraft Store (see last page for directions). Dues are \$25. per year and due each January. Guests are welcome. Special rates for those who join late in the year. See Dan Luttrell (Membership Director, danluttrell@verizon.net) or at the meeting for more information. Our events are now incorporated into the Richmond Cultural Arts Calendar which is a community-based organization that supports local arts organizations and individuals by highlighting events, performances, etc. Our current page can be accessed at the following link:

http://calendar.richmondcultureworks.org/event/richmond_woodturners_monthly_meeting

or at: <https://www.richmondwoodturners.org>

Reading and Viewing Materials

Our Lending Library is being inventoried. Hopefully a current list of books, pamphlets, CDs and DVDs will be available soon. Procedure to borrow should be made available also.

Tools that can be borrowed

List and photos of our tools to borrow. Several new additions have been made recently— a list of these and the newly acquired should be available soon. In the meantime the following are readable available



Threading Set



Texturing Tool



Set of Hollowing Tools



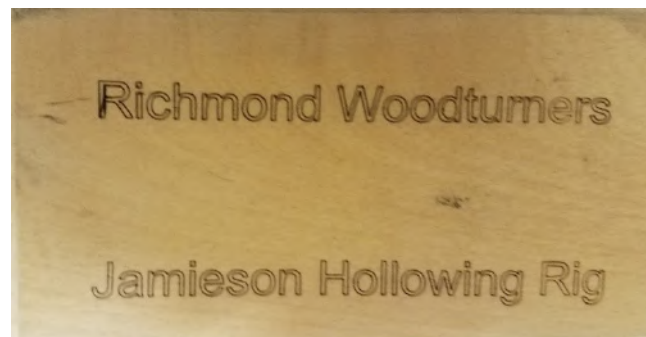
Texturing tool



Spindle Gouge



Hollowing Tool



*Jamieson Hollowing Rig large 3 X 12 X 24
Wooden Box*



Contact the store at:

Phone: [804-355-3945](tel:804-355-3945)

Fax: 804-355-2532

Email: richmond-retail@woodcraft.com

9862 West Broad Street

Glen Allen, VA 23060

Organizations such as the Richmond Woodturners, Richmond Pen turners and James River Woodcarvers would not exist if it weren't for the kindness of their sponsors. We are blessed and grateful to have the Richmond Virginia Woodcraft store supporting us and our activities. Members get a 10% discount on meeting nights for most turning related items.

Please remember this and support them at every opportunity!

For the classes provided at this location see:

<https://www.woodcraft.com/stores/richmond/classes>. Look for classes taught by Ray Deyo, Clark Brummett, David Sterling, Brian Noble-Marx and others

SOMEONE WITH WOOD LOOKING FOR A GOOD HOME

James Kiser recently cut down an American chestnut tree that died of blight. It is 6-8 inches at the base and he cut it into 3 sections about 5 feet long. There are also several limbs in the 2-3 inch range that might work for pens or handles. In addition, a large black locust fell in his woods over the winter, and he recently pruned some cedar limbs in a similar 2-3 inch range. He would love to see these turned into something other than firewood.

Contact James at mogyofig@yahoo.com