

Richmond Woodturners

Newsletter November 2019



Meeting Notes of the Richmond Woodturners October 17, 2019

Welcome

New Members: Luigi D'Amato, Switzerland

Visitors: John Norkunas, Midlothian, VA

State Fair update:

Lending Library update:

Christmas Party - December:

November Elections: Vice President, Resource Director, Membership Director, Past President

Demonstrations:

Tonight: Bruce Robbins - Tops: Basic to Advanced.

November: David Sterling - How to prevent end-grain Tear Out.

December : Holiday Party – No demo

January - TBA

Quarterly Challenges

4th Quarter: December—Tops that spin – Competition

1st Quarter: Purely Sculptural. Turn a piece with no real or perceived practical function.

2nd Quarter : Natural Edge / Bark Edge Bowl, Platter, Goblet, Weed Pot.

3rd Quarter: Make a pair of candle sticks in style of Rude Osolnik, Simple lines, yet elegant and subtle.

Other Business or Announcements:

Show and Tell:

In This Issue

| | | | |
|----------------------------|-------|--------------------------|-------|
| Meeting Notes | 1 | Board Officers | 18 |
| Elections | 2 | Snack Providers | 18 |
| Demo by Bruce Robbins | 3-8 | Demonstrations List | 18 |
| Tops & More Tops-Some Tips | 9 | Financial Report | 19 |
| Christmas Party Info | 10 | Quarterly Challenge List | 19 |
| Rules for Spinning Tops | | Richmond Chapter Info | 19 |
| Competition | 11 | Library List | 20-21 |
| President's Letter | 12 | A Quote | 21 |
| Penturners Notes | 13 | Tools to Borrow | 22 |
| Show and Tell | 14-16 | Woodcraft Info | 23 |
| Christmas Party Info | 17 | Where We Meet | 23 |

During the November meeting we will be electing new officers as listed below.

| Officer | January 2018 Term | Current | New Candidate - 2020 |
|---------------------|---------------------------|----------------|----------------------|
| | | | |
| Vice President | 2 years expires 12/2019 | Jim Bumpas | Open |
| | | | |
| Board Position | January 2018 Term | Current | New Candidate 2020 |
| Past President 1 | 2 years . Expires 12/2019 | Lee Scarbrough | Lee Scarbrough |
| Resource Director | 2 years . Expires 12/2019 | Chuck Bajnai | Stan VanDruff |
| Membership Director | 2 years . Expires 12/2019 | Dan Luttrell | Chuck Bajnai |

Officers and Board Members Remaining in Office:

| Officers | January 2019 Term | Expires December | Current |
|----------------------------|-------------------|------------------|---------------|
| | | | |
| President | 2 years | 2020 | Bill Buchanan |
| | | | |
| Treasurer | 3 years | 2021 | Cody Walker |
| Secretary | 2 years | 2020 | Bob Silkensen |
| Directors | | | |
| Activities Director | 2 years | 2020 | Georgia Wood |
| Information / Web Director | 2 years | 2020 | Stan VanDruff |
| Newsletter Editor | 2 years | 2020 | Bob Marchese |
| Past President 2 | 2 years | 2020 | Ray Deyo |

Committee Chairs – Appointed Positions:

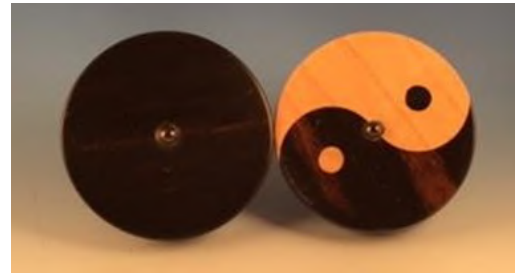
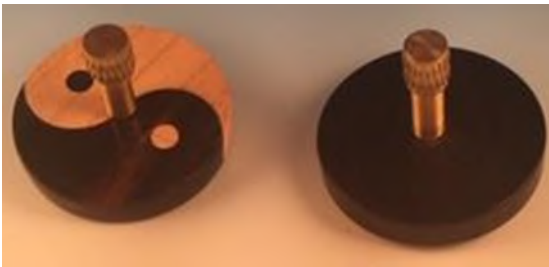
| | |
|------------------------|--------------|
| Turning Competition | Jim O’Hanlon |
| Audio / Visual | Jared Parker |
| Social Media | Vacant |
| Contributing Writer | Izumi Miller |
| Photographer | Tim Warren |
| AAW / Women in Turning | Meg Turner |
| | |
| | |

Turning Tops with Bruce Robbins *Basic to Advanced*

After making some tops for kids attending the club demos at the State Fair and Makerfest, I felt the need to improve my spindle turning for less tear out as well as exploring some unique designs, longer spin times and a variety of decorating techniques. After some internet research, joining some Facebook groups, and a few YouTube videos, I found myself deep in a rabbit hole that kept me occupied for a good part of the year with still more exploring and refining to go. There were tops that used string to start the spin, tops that turned sideways or upside down while spinning, tops you throw, tops with and without stems, tops that spin on your finger, whimsical tops and more.

First designs

After making some more traditional designs I learned that for longer spin times, spinning on a ceramic ball bearing was better than a pointed or even somewhat rounded surface. I later learned that ruby spheres were even more preferred. These early tops were merely round disks with a brass stem and the bearing embedded on the bottom.



While I really liked the Yin/Yang design, I got my first lesson in the need for balance. The solid ebony disk spun nicely with up to 2 minute spin times while the other top wouldn't go for more than a few seconds. Turns out that the difference in density of the maple and ebony is enough to render the top useless except for a looker. In addition, there was little clearance from the ball to the bottom surface which caused some slowdown if there was any wobble.

Going for long spin times

Further intrigued by the possibilities of long spin times with finger twists and reading that ten minutes and much longer was possible, I ventured into metal based tops and spin stations knowing that I would be happy with anything approaching 5 minutes. Total weight, diameter, weight distribution, friction and balance all play a role in performance. I did reach my goal, although it was short lived for some unexplained reason. Below are a few of my trials, some solid metal, others with brass on the outside and aluminum in the center. The best ones I've read about have tungsten on the exterior and a lighter metal in the center. Also is a picture of a spin station made with a 4 inch concave glass lens.





Tops that turn upside down or sideways

The tippe top, ellipsoid, and somersault are three versions of spinning tops that when spun one way wind up spinning in different positions.



The tippe top when spun with the stem up will become unbalanced, turn upside down and spin on its stem. Pictured in maple, in burl and in brass.



The ellipsoid, preferably made with the length to width at the golden ratio of 1.618:1, when spun on its side will soon start spinning on its end.



The somersault top will spin erratically when spun with the pointed tip facing down, but, when touched in the right places while spinning, will flip upside down and start spinning smoothly on the flat end.

Whimsical tops with a variety of decorating techniques



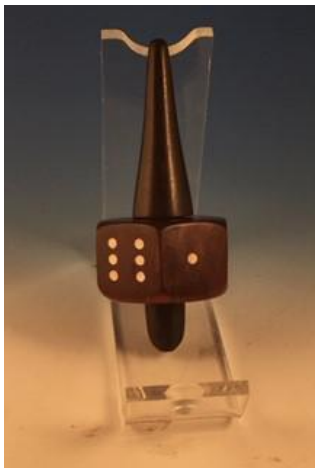
With training wheels – still learning



Textured with bur in rotary handle
Colored with alcohol markers



Painted, textured and colored dancing tops



Facetted top for dice
games



Faux stone top with ball
bearing center



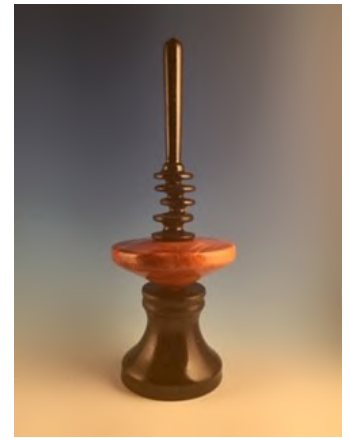
Watch face inlay



Levitating top



Wooden top with polymer clay



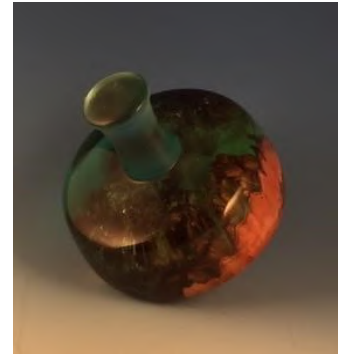
Multi-axis top



Stemless hypnotic spinning disk



Golf ball spinner



Resin/burl hybrid



LED lights when spun – PCV pipe launcher



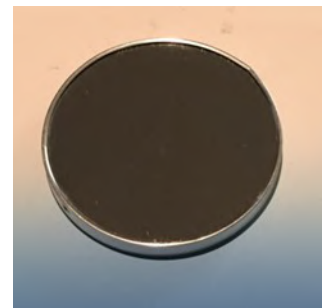
Throwing top with string launcher



9" concave spin station



12" Flat glass spin arena



5" convex mirror spin station

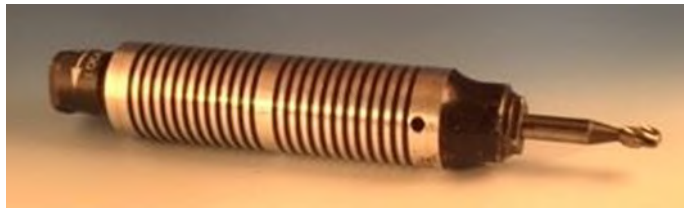
Tooling

I have long been a fan of making my own tooling and while I own the standard set of gouges, I always seem to gravitate to my own versions. This year I took a side trip to improve on a system which is low cost and seems to serve all my needs. After looking at some commercial designs, I found an inexpensive collet holder on eBay that could be used with round or rectangular tools up to $\frac{1}{2}$ " and square tools up to $\frac{3}{8}$ ". One tool handle with 3 or 4 collets could now accommodate virtually all the tools I have as well as any I might like to try in the future. Scrapers, gouges, parting tools, etc., all fit this one quick change system.



My go to tool for spindle work has long been the bedan. I started using this mostly at the center line with the bevel down as it works great to make square stock round. The issue, common with other roughing techniques was tear out. While bevel up at the centerline was ineffective, raising the tool rest and approaching the work high gives a much improved surface with minimal sanding required.

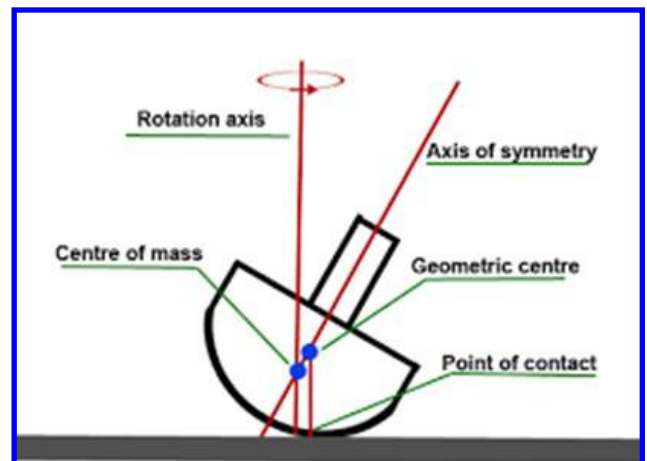
For texturing, I have been using rotary bur mounted in a Foredom rotary tool holder not connected to the motor. Several bur styles are available.



Demonstration:

Making a Tippe Top

A Tippe Top consists of a hollowed out truncated sphere with a stem. It should be hollowed such that the center of mass is never above the point of contact unless it is upright. When tilted, the Tippe Top should always come to rest in the upright position. I start by making a cylinder approximately $1\frac{1}{4}$ " in diameter. I then turn the stem to a $\frac{1}{4}$ " diameter about $\frac{1}{2}$ " long and ensure I have a smooth end. I then turn the top of the truncated sphere and start on the bottom section, leaving enough wood mass to enable hollowing but getting the general idea of the shape. Any texturing should be done at this point. Hollowing is done with a rounded $\frac{1}{8}$ " square tool bit mounted in a brass rod for stability. When done hollowing, the rest of the bottom can be shaped and parted off. To finish the bottom, the top is reversed and held by collet chuck or jam chuck. (A version of a collet chuck can be easily made by drilling a $\frac{1}{4}$ " hole in a scrap piece held in a scroll chuck. Saw a kerf into the hole and when the chuck is tightened it will grip the stem).



Resources:

AAW Publication: Woodturning Fundamentals – Turners are Tops (Free download to members)

<https://www.woodturner.org/store/ViewProduct.aspx?id=7152294&hhSearchTerms=%2522tops%2522>

Contains many articles and photos of different top types.

Source for buying unusual tops and other toys

<https://www.grand-illusions.com/>

PVC pipe launcher instructions:

<http://www.davidreedsmith.com/Articles/PVCLauncher/PVCLauncher.html>

Collet holder for turning tools

eBay – Search for C3/4-ER20A-50L Straight Shank Collet Chuck Holder Milling Extension

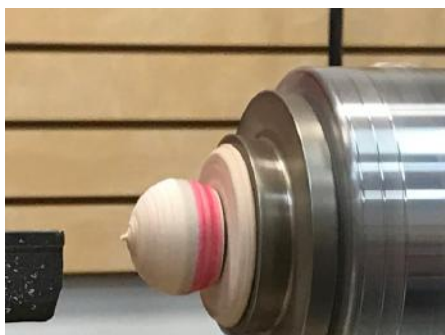
Ceramic ball bearings

eBay – Search for 4mm silicon nitride ball bearings

Ruby spheres (4mm)

<https://www.swissjewel.com/products/sapphire-ruby-balls-hemispheres/ruby-balls/>

Turning a Tippe Top and some of the shop made tools used. Photos by Chuck Bajnai, Thank you.



Some time ago, while surfing the net, I came across the article below. I thought that it would guide me in turning some tops. That never took place, but perhaps it could help others to do so. I have no recollection when and where the article came from, so I can only thank Jim (whoever he is) in providing this information. Bob Marchese

Tops, Tops, & More Tops

Spinning tops have been a popular children's toy in many different cultures throughout history. The Chinese spin tsa lin (tops). Japanese spin koma asobi (top spinning). The dreidel (top) is used for a traditional Jewish Hanukkah game. The spinning top was one of the earliest toy patents granted by the United States Patent Office. Scientists and sailors attempted to use the spinning top to assist in navigation, which led to the development of gyroscopes. In 1898, Ludwig Obry used the gyroscope in the steering mechanism he developed. Elmer Sperry used the gyroscope as a component of the automatic pilot he invented in the early 20th century. Today, gyroscopes are commonly used in navigation systems in ships, missiles, airplanes, satellites, and space shuttles... and children throughout the world continue to enjoy spinning tops, as they have throughout history.

The "best top" is one made from very consistent material and machined very carefully. It would also probably be a thin disc, with a thicker rim to move the weight away from the axis, and the disc would be very close to the surface on which it will spin. Since we are making our tops of wood which is a totally inconsistent material, I have found that laminating different layers and alternating the grain tends to help. A large top turned from one block of wood is almost always a disaster.

Another suggestion regards the point on which the top will spin. Ironically a very sharp point may cause problems. A very sharp point may dig into the surface a bit, making any slight vibration due to material and machining variations much more pronounced. A slightly rounded tip allows the top to vibrate a bit with the point moving around slightly on the surface, while the top itself spins quite smoothly.

Basic Design Rules

The greater diameter of the whorl (circular mass that rotates the spindle) the longer the top will spin.

The greater the diameter, then the more stable the top will be.

The more weight on the perimeter, the more difficult it will be to finger spin

The more weight you have on the perimeter, the more thought you have to put into the design of the finger spin shaft, i.e. the more weight the larger the diameter of the finger spin area of the shaft and also the great need for "grip" being built into the design (Of course you can make it a longer "palm spin" shaft if you like!)

The position of the whorl on the shaft has an effect on the stability. The lower the whorl, the more stable. Higher than one third of the shaft length begins to make the top much less stable. Though palm spin (faster spinning) tops will work OK at above this height. Sure it will still spin ok but, it will better if the proportional position is lower than one third.

Whorl and weight principles can be stated more scientifically by talking about center of gravity, instead of where the main weight is positioned.

Design your top shape for streamline effect. Air friction does have an effect, though only really noticeable on a very "whiskery" top.

Reduce friction at the contact point also. A sharp, but not penetratingly sharp point will be better than an blunt point. Metal is better than most woods as a spinning point. Glass is a great surface to spin them on. (a concave shaving mirror...the sort that makes your face look bigger!! It has a nice retaining rim too)

Written by Jim (unknown name), Thank You!

For even more info see:

Top Playground

<http://www.davidreedsmith.com/Articles/TopPlayground/TopPlayground.html>

And

<https://www.finewoodworking.com/2012/12/10/tips-for-tops>

Or just Google "the physics of spinning tops" to see what you get.

Christmas Party, December 19th

For the Christmas Party at the next meeting; See page 17 for food assignment. Bring five things: A gift turning (wrapped) for the gift exchange and your best of the year for Show and Tell. Also, the 4th Quarterly Challenge – a Spinning Top, See Rules on page 11; FOOD for the party and a guest. Of course, all are optional. But - you do need to be there. PLEASE HAVE THESE ITEMS AT WOODCRAFT READY FOR SET UP BY 6:15PM. TO HELP THOSE SETTING UP FOR THE MEAL, THE DINNER ROOM WILL NOT OPEN UNTIL 6:30PM.

GIFT EXCHANGE RULES

Those who participated in this part of the event other years had a great deal of fun and we are looking for a much wider participation this year. Here is how the exchange works.

- 1) At your arrival, please place your WRAPPED gift on the exchange table, get a ticket
- 2) Participants will be assigned numbers sequentially.
- 3) After dinner, when your number is called, you will select any one of the gifts on the table.

Or (and here is where the fun starts...)

- 4) You can choose one of the gifts already selected by another member thereby giving them the opportunity to select a new gift from the table.
- 5) This selection process continues until each participating member has acquired a gift and there are no gifts left on the table.

BUT...

- 6) To be fair to the very first participant who received the first gift, that person, and only that person, will have the opportunity to exchange their gift with any others if he/she so desires.

There are only three rules to the exchange: 1) The gift must be turned;

- 2) No gift can change hands more than three times, and
- 3) You MUST have fun.

DISPLAY TABLES

This is the time for everyone to show off their favorite or best piece turned in 2019. Please bring your one item and place it on the table for all to see. Help us show our nonmember guests what we are all about and have one more chance for a new idea to try. Hopefully we will need two tables because everyone will add to the display.

QUARTERLY CHALLENGE – A Top. We will have a table especially reserved for your challenge piece.

Don't forget we will need to exit by 9pm, so clean up will begin about 8:30.

Remember – there will be three sets of tables set up:

- 1) For the gift exchange,
- 2) For your best of the year,
- 3) For the challenge.

Spinning Tops Competition – December 19, 2019

Richmond Woodturners Are Tops.

All Wood: Finger snapped tops onto a table-top spin station.

- Various stations will be available to include a few identical ceramic dinner plates.
- Bring your own spin station if you like, or if integral to your design.
- Tops must be all wood. – may be multiple pieces or glued up laminated wood.
- No metal or ceramic parts. May be decorated with ink or paint.
- One false start allowed.

Non-Wood: Finger snapped tops onto a table-top spin station.

- Can be various materials to include metal. May be decorated.
- Various stations will be available to include a few identical ceramic dinner plates.
- Bring your own spin station if you like, or if integral to your design.
- One false start allowed.

String Assisted tops (with or without launch handles).

- Can be various materials and decorated.
- Get Real! Hand launched - No motors please.
- Launched onto a table top spin station, or onto floor.
- Various platforms will be available to include a few identical ceramic dinner plates.
- Bring your own spin station if you like, or if integral to your design.
- One false start allowed.

One spinning top per turner, per class. Each class to be separate timed events.

Longest spinning time per class wins bragging rights.

One gift card drawing ticket to all who enter the challenge.

Normal challenge rules apply.

Let the games begin!

Additional quarterly challenge tops or other best of 2019 pieces encouraged for display

President's Notes - November 2019

It's November already and another year almost gone. It's been a good year, a busy year, and a productive year. That means that we have two more enjoyable holidays coming up very shortly to include the Christmas gift turning . If not already started, you best get a round to it so that the finish isn't still tacky on December 25th, like may have happened at least once in past years.

November has a few significant happenings for your club. First of all, our November meeting also means elections for a few key officer and board positions. We have had a few folks step forward as candidates to assume roles to keep our club moving in a forward and positive direction, doing so tends to keep our club strong. Jim Bumpass served us very well during his term as Vice President and we thank him for his official and unofficial efforts to help guide the club along. Having helped the club out very admirably during his term, Jim is moving on and that means we need a Vice President. The VP is an office of great significance since the demo schedule, as a primary duty, is arranged by the Vice President. Fortunately, Jim was kind enough to overextend his duties above and beyond the call, to line up our first few demonstrations for next year to give our next incumbent a head start. Remember, your participation is what makes this club rank among the best.

Secondly, our very own David Sterling will show us how to prevent that ever pervasive problem of end-grain tear-out that can haunt beginner and expert alike. The difference is that the experienced among us has learned a few things over the course of years on how to deal with it, to at least minimize the problem. David is one of those folks.

Your board is hard at work trying to finalize a few details for our annual Christmas party. Among them, the feast. Kindly see elsewhere in the newsletter on what to bring. If you weren't able to make it last month, you missed an excellent demo and display by Bruce Robbins, now dubbed our master of spinning tops. Fortunately, a great write up can also be found in this newsletter. Without a doubt, a lot of inspiration can be gained from that demo in preparation for our December quarterly challenge and spinning tops competition.

Speaking of the AAW... Oh, I wasn't. Well I am now. Once again, our parent organization will have a drawing for a 2020 Scholarship to either Arrowmont in Tennessee or John C. Campbell in North Carolina. Note that you must be an AAW member to be chosen. 28 scholarships will be awarded among all applicants, 14 per venue. What's new this year you ask: AAW has introduced a self nominating process using an on-line submission form at: <http://tiny.cc/AAWScholarships>. Also new: There is no limit to the number of applications from AAW members in each chapter. Go for it and good luck!

Enjoy and digest the balance of a great newsletter. Bob Marchese and Izumi Miller have put a lot of work into it. Thanks also to Tim Warren for his photography skills. Please remember to fill out a photo tag for your show & tell and/or your competition items so that we can accurately identify your work.

We'll see you at the meeting.

Keep your tools sharp, yourself safe, and let the chips fly.

Bill Buchanan

Penturners News

The November meeting was our third annual turnathon making pens for the troops. Woodcraft supplied the kits and our members turned 36 pens to be donated. Also, by special request, John Penberthy did a quick demo of his CA/Boiled Linseed Oil finish where he applies 15 coats of the combination for a super high gloss finish. The CA and BLO are applied simultaneously with a drop each on folded paper towel and rubbed on the surface. Some pictures of the event below.



SHOW AND TELL



Ron Bishop, Cuban Mahogany, Liberan Oil,
6" X 4", Avelino. Samuel Class



Steve Schwartz, Osage Orange, Poly, 15"d X 2 1/2"



Greg Corbet, Spalted Maple Burl, Shellac, 10" X
3" Bowl



Greg Corbet, Flame Box Elder, Lacquer,
4 X 2 1/2 Lidded Box



Rob Morgan, Assorted Species, Mylands Friction
Polish, 10"d X 5, 1st Segmented Piece



Dan Luttrell, Front Yard Maple, Dirt and
Spit Finish!!, 3" Baseball



Steve Kellner, Polonia, Varnish, 12" X 2½, Budvase



Robert Gundel, Osage Orange, Buffed & Waxed, 4" w X 10" h



Jim Bumpas, Maple/Maple, Waterlox, 6" aver, 3 Ornaments



Dan Luttrell, Multiple Species, CA Finish, 5 1/4 ", Pen



Gordon Kendrick, Hickory, Spray Shellac, Timber Frame Mallet



Steve Kellner, Eastern Cedar/Mahogany, Linseed Oil, Rockhard Varnish, 11 X 14 with 11 X 3 ½ Finial, Something fun out of cedar



Ken Robertson, Various Species, Lacquer, 4" to 8",
Based on an Article in our Newsletter



Jim Zorn, Walnut, Friction Polish, 4 ¼ X 2 ¼ h, Ring Holder



Bill Buchanan, Maple, w/o Finish,
"It Happens: 6" X 8"

RICHMOND WOODTURNERS CHRISTMAS MEETING

Our December 2019 monthly meeting will continue the tradition of a holiday party at Woodcraft. We are looking forward to sharing a meal together with members and spouses/guests as well as having fun with a gift exchange. With everyone in attendance, we will, again, take the opportunity to show each other what we have done throughout the year and the challenge will become part of the festivities. All in all, it looks to be another great holiday event! Below is an outline of the evening.

FOOD TABLES

What better way to socialize than with food and drink in hand. Turkey and ham have already been donated and the club will provide paper products, utensils and (lots of) rolls. Table decorations and ice will be provided by Royal and Georgia Wood but we need help with the rest. To make sure there is ample treats for all, we have divided the club roster into four colors with general assignments to each.

APPETIZERS

Mike Squire
Ned Robertson
Philip Duffy
Ralph Lutz
Ray Deyo
Ray Melton
Richard Crook
Rob Morgan
Robert Gundel
Robert Hopewell
Robert Marchese
Ron Bishop
Ron Thompson
Royal Wood
Sherman McLaughlin
Sherry Neff
Stanley VanDruff
Steve Kellner
Steve Reilly
Steve Schwartz
Susan Hillyer
Terry Moore
Tim Warren
Tom Brooks
Tom Crabb
Tom Seidel
Wally Ubik
Walt Conner
Walt Whilden
Wayne Glasscock
Willie Strickland

SIDE DISHES

Al Pristera
Alan Harrell
Alan Weber
Amos Peterson
Andy Hammer
Ann Horton
Barbara Dill
Bill Buchanan
Bill Jenkins
Bill Talbott
Bill Walters
Bob Hudson
Bob Silkensen
Bob Tingle
Bonnie Cross
Brad Miller
Brian Witt
Bruce Robbins
Cecil Barrett
Chick Kleman
Christian Vieweg
Chuck Bajnai
Chuck Horton
Chuck Mosser
Cody Walker
Colin Smith
Craig DeBussey
Dan Fritz
Dan Luttrell

DRINKS

Dave Bushman
David Gray
David Haywood
David Kartzman
David Sterling
Dawn Flores
De'Jah Wright
Deane Cox
Dick Hines
Don Hayes
Don Rowe
Donald Hart
Doug Dill
Doug Murray
Doug Shackelford
Ed Wood
Fran Brooks
Galen Rice
Gene Milstead
Georgia Wood
Gordon Kendrick
Greg Glennon
Greg Gorbet
Herb Walke
Herbert Hausmann
Izumi Miller
James Carbone
Jared Parker
Jeff Lohr

DESERTS

Jerry Fisher
Jerry Harvey
Jim Bumpas
Jim Ellis
Jim Marstall
Jim O'Hanlon
Jim Parker
Jim Severson
Jim Walker
Jim Zorn
Joanne Fisher
John Daniel
John Roberts
John Snead
Joseph Boyle
Karl Glasscock
Kathaleen Wright
Katherine Harris
Knavey Moyher
Larry Yancey
Lee Scarbrough
Lori Rodgers
Luigi D'Amato
Mac Derry
Margaret Turner
Mark Strang
Marlin Fegely
Matt Baker
Mike Kolodzinski

PLEASE NOTE: TAKE HOME WHAT YOU BROUGHT SO CLEAN UP IS EASIER. THANK YOU.

Board Officers

Bill Buchanan - President
Jim Bumpas - Vice President
Bob Silkensen - Secretary
Cody Walker - Treasurer

Directors

Dan Luttrell – Membership Director
Georgia Wood – Activities Director
Stan VanDruff – Information Director/Webmaster
Chuck Bajnai – Resource Director
Ray Deyo – Past President
Lee Scarbrough – Past President

Committee Chairpersons

Jim O’Hanlon – Turning Competition
Jared Parker – Audio/Video
Jared Parker and Barbara Dill - FaceBook
Administrators
Meg Turner - AAW Women in Turning Liaison

Newsletter Staff

Bob Marchese – Editor
Izumi Miller – Contributing Writer
Tim Warren – Photographer

October Snacks & Drinks Providers

GEORGIA WOOD ICE/COOLER
ROBERT HOPEWELL..... 2LITER COKE
ROBERT MARCHESE..... 2LITER DIET COKE
RON BISHOP2LITER PEPSI
RON THOMPSON.....2LITER CAFFEINE FREE SODA
ROYAL WOOD CHIPS
SHERMAN MCLAUGHLIN..SWEET SNACK
SHERRY NEFFSWEET SNACK
STANLEY VAN DRUFF....SALTY SNACK
STEVE KELLNER COOKIES

Please Text Georgia if you cannot bring
assigned snack @ 804-525-8291

2019 and 2020 Demonstrations.

November 21: David Sterling: How to Prevent End Grain Tear Out

December 19: Holiday Party and Tops Competition.

January 16: Barbara Dill: Sculptural turning techniques

February 20: Art Liestman: Thermoforming and other creative turning techniques, via remote.

March 19: tbd

Financial Report

| | |
|------------------|-----------|
| Previous Balance | \$5019.96 |
| Income | 373.60 |
| Expenditures | 0 |
| New Balance | \$5393.56 |

Quarterly Challenges

The Challenges are regularly scheduled for the third month of each quarter (March, June, September, and December). Entries will be placed on a table separate from the Show-n-Tell table.

4th Quarter, 2019 - December Tops that Spin – Competition

1st Quarter, 2020 - Purely Sculptural. Turn a piece with no real or perceived practical function

2nd Quarter, 2020 - Natural Edge/Bark Edge - Bowl, Platter, Goblet, Weed Pot, Etcetera

3rd Quarter, 2020 - Make a pair of candlestick holders in style of Rude Osolnik. Simple lines, yet elegant and subtle.

Richmond Woodturners Info

Our club meets on the third Thursday of each month at the Richmond Woodcraft Store (see last page for directions). Dues are \$25. per year and due each January. Guests are welcome. Special rates for those who join late in the year. See Dan Luttrell (Membership Director, danluttrell@verizon.net) or at the meeting for more information. Our events are now incorporated into the Richmond Cultural Arts Calendar which is a community-based organization that supports local arts organizations and individuals by highlighting events, performances, etc. Our current page can be accessed at the following link:

http://calendar.richmondcultureworks.org/event/richmond_woodturners_monthly_meeting

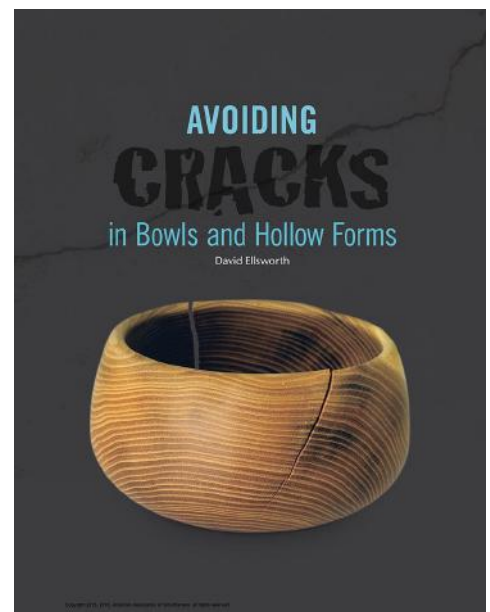
or at: <https://www.richmondwoodturners.org>



AAW EXPLORE! ARTICLES OF THE WEEK

In his article, "**Avoiding cracks in bowls and hollow forms**," from the August 2015 issue of *American Woodturner*, David Ellsworth explains that wood continues to move forever, and that cracks and other imperfections should be viewed as design opportunities. He discusses drying wood, wall thickness, causes of cracking, and how to address cracks.

http://www.aawexplo.wwwmi3-ss30.a2hosted.com/aaw_cs1_pdf/AW3004p17-19.pdf



Inventory of Richmond Woodturners Library as of October 2019

Books/Printed Materials

| Title | Author | Subject Matter |
|---|---|--|
| AAW Turning Projects from Scrap | Robert Rosand | Using scraps to create turnings |
| Bandsaw Tuning | Alex and Howard Snodgrass | |
| Bending to Turn | Tom Crabb | CVWT Demo |
| Bowl Basics: A Workshop with Mike Mahoney | Mike Mahoney | Turning Bowls |
| Collectors of Wood Art | SOFA Chicago 2002 | |
| Common Native Trees of Virginia | VA Department of Forestry | |
| Hollow Forms the Easy Way | Lyle Jamieson | Hollow forms |
| McNaughton Center Saver | Mike Mahoney | Center saver |
| Pyrography | Molly Winton | Wood burning |
| Relief Carved Embellishments for Woodcarvers and Woodturners | Tony Cortese | Embellishments |
| Segmented Turning :A Learning Experience | Bill Kandler | Segmented turning |
| Square Oriental Box | Jimmy Clewes | Turning a square box |
| Starting Out Woodturning | Robert Sorby | Introduction to woodturning |
| The Ellsworth Signature Gouge | David Ellsworth | Using Signature Gouge |
| Turning Pens Video II | Kip & Rex | Pen Making |
| Turning Pens Video II | Kip & Rex | Pens plus tips and tricks |
| Turning Projects | Richard Raffan | |
| Woodturning Tools | Robert Sorby | Using tools |
| Woodturning: Shopmade Tools and Jigs | Alan Lacer | Making woodturning tools |
| Woodturning Christmas Ornaments | Dale L. Nish | Making different Christmas ornaments |
| 500 Wood Bowls | Numerous artists | Collection of images |
| Turn A Bowl | Ernie Conover | Instructions on turning multiple bowls |
| Turning Bowls | Richard Raffan | Instruction on turning multiple bowls |
| Woodworkers Guide to Sharpening | John English | How to keep your tools sharp |
| Turning Projects | Richard Raffan | Multiple projects for turning |
| 2012 Virginia Woodturners Symposium, Inc | Program Booklet | Multiple projects for turning |
| 2016 Virginia Woodturning Symposium | Program Booklet | Multiple projects for turning |
| Pens From the Wood Lathe | Dick Sing | Step by step instructions |
| American Woodturner Spring 2004 | 5 Giants in turning: Prestini, Stocksdales, Moulthrop, Lindquist, Osolnik | |
| American Woodturner Winter 2005 | Layered bowls, lidded ball, segmented bowl | |
| American Woodturner Fall 2004 | Holiday projects, funeral urns, turner's bandsaw | |
| Turning Wood | Richard Raffan | Comprehensive instruction |

Electronically Stored Materials

These items are being inventoried

Richmond Woodturners Library (Added 4-18-19)

BOOKS

Ornaments & Eggs
TOPS-Making the Universal Toy
Miniature Birdhouses
Woodturning Xmas Ornaments
Turning Custom Duck and Game Calls

DVDS

Turning The World Vol. 1, Vol. 2, Vol 3
Turn It Up Vol. 1, Vol. 2, Vol. 5
Turn It On Vol. 1. Vol. 2, Vol. 3
Skew Chisel
Son of Skew
Vessels of Illusion
Decorative Utility Bowls
Hollow Forms-The Easy Way(2)
Aesthetics & Properties of Wood
Finial Star
Basic Pen Turning
Turned Bowls Made Easy
Beyond the Basic Bowl
Making a Peppermill
Turning for Food (Kitchen Projects)
Hollow Forms and Urns (Workshop)
Closed-End Pens Design & Turning Techniques

Author

Dick Sing
Michael Cullen
Dick Sing
Dale Nish
Ed Glenn & Greg Keats

Jimmy Clewes
Jimmy Clewes
Jimmy Clewes
Alan Lacer
Alan Lacer
Trent Bosch
Trent Bosch
Lyle Jamieson
John Jordan
Cindy Drozda
Bill Baumbeck
Bill Grumbine
Bill Grumbine
Ted Sokolowski
Nick Cook
Mike Mahoney
Davidson

One meeting every month not enough?

Check out what other clubs around our area are doing!

Several other woodturning organizations in your area such as Tidewater Turners , Apple Valley Woodturners, Woodturners of the Virginias, Capital Area Woodturners, Virginia Woodturners and Catoctin Area Turners are near by depending where you live. Google one (or more) and look at their website/newsletter to find what might be of interest.

QUOTE OF THE WEEK

"I have always been fascinated by how intently woodworkers, woodturners, and the general public fear the word 'cracks' when it comes to wood. We woodies are so meticulous when it comes to considering moisture content, grain direction, clamping devices, drying schedules, species characteristics, miracle glues, impregnable finishes, and, of course, design considerations-all in an effort to control cracks. The fact remains that with all our technology, both scientific and applied, the universal law of all woodworking remains: Wood moves. And it continues to move... forever."

David Ellsworth,
American Woodturner, August 2015

TOOLS TO BORROW

Located in Storage Cabinet



Threading Set



Set of Hollowing Tools



Texturing Tool



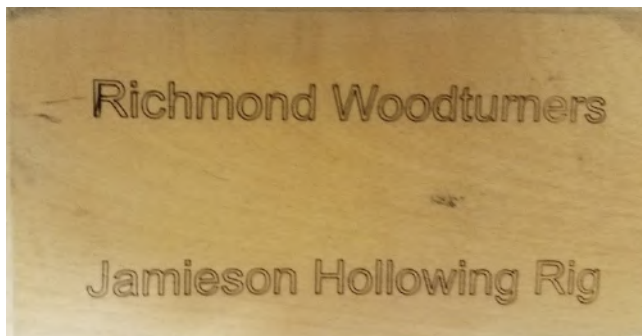
Texturing Tool



Texturing tool



Spindle Gouge



**Jamieson Hollowing Rig large 3 X 12 X 24
Wooden Box**

There are some more tools available—See Lee Scarbrough



Contact the store at:

Phone: 804-355-3945

Fax: 804-355-2532

Email: richmond-retail@woodcraft.com

9862 West Broad Street

Glen Allen, VA 23060

Organizations such as the Richmond Woodturners, Richmond Pen turners and James River Woodcarvers would not exist if it weren't for the kindness of their sponsors. We are blessed and grateful to have the Richmond Virginia Woodcraft store supporting us and our activities.

Members get a 10% discount on meeting nights for most turning related items. Meeting times:

James River Woodcarvers meet the first Thursday of each month at 6:00 pm

Richmond Pen Turners meet the second Thursday of odd months at 6:30 pm

Richmond Woodturners meet the third Thursday of each month at 6:30 pm

The James River Woodcarvers have an open carving at the store every Thursday from 1:00 pm to 3 pm.

Please remember this and support them at every opportunity!

For the classes provided at this location see:

<https://www.woodcraft.com/stores/richmond/classes>.

Look for classes taught by Ray Deyo, Clark Brummett, David Sterling, Brian Noble-Marx and others.