



RICHMOND WOODTURNERS

March 2021



Contents

President’s Corner..... 1

Notes from February Meeting..... 1

2021 First Quarter Challenge..... 2

2021 Remaining Challenges 7

Show and Tell 7

February Demonstration 9

Future Demonstrations..... 13

Membership 13

News of Note 13

Income and Expenses..... 14

Member Resource Contacts 14

For Sale 15

Tips and Tricks 15

Questions and Answers..... 16

2021 Officers and Committees 16

From the Editor 16

Logo Designs 18

Sponsors and Friends of the Club 19

President’s Corner

From Steve Kellner:

As I’m sure many of you have heard, Bruce Robbins was in an auto accident and is in MCV with head injuries. I sincerely hope he is well on his way to recovery. Please keep him and his family in your thoughts and prayers.

As for our normal RWT activities, the last month has been more eventful than many over the last year. We had an excellent and enlightening presentation

entitled: **When Good Wood Cracks by Dennis Belcher**. I talked with Dennis for about a half hour after others had signed off. He almost makes you want your turnings to crack so you can be creative with a repair!

We also had two other activities that almost seemed like pre-pandemic normal. The first was not an official club activity: the sale of Alton Bradford’s woodworking equipment, wood and miscellaneous supplies by his daughter Kimberly and husband Ronnie Collins. It was great to see everyone who attended the sale. Kim and Ron were very happy with the turnout and results of the sale and want to thank all who participated. Both Alton and club members made out well. I think it’s a toss-up between Bill Jenkins and me for who ended up with the biggest haul! (I just could not resist buying the planer and 20” disk sander). I hope we all take something else away from this sale: When you stop using your shop, be honest with yourself and liquidate the shop yourself rather than leave it to your wife or children!

The other in-person interaction that occurred in February was our first Wood Auction put on by Larry Yancy and his team. It went great and it was great to see a number of club members in person again!

Lastly, I was happy to see the larger number of **Show & Tell** items last month. Let’s keep it up!

Notes from February Meeting

CLUB LOGO REDESIGN

You have to agree – the old logo leaves something to be desired. Use your imagination to create a new one. Perhaps your idea can be synthesized with someone else’s to create a great logo. Entries should be

submitted to Steve Kellner in a JPEG format (preferably). Steve Schwartz will render the concept more artistically if the submitting member has a good idea, but not the capability to execute it in digital format. It was tentatively decided that the contest would close at the end of February, with recognition



of the submitter. There will possibly be a prize award, but the Board has not yet taken this up. Several designs have been submitted so far. Look for them on page 16.

WOOD RAFFLE

From Larry Yancey: The first Richmond Woodturners raffle was a big success. There was a large variety of wood, along with some very unusual items. The revenue for the club was \$163.00 and the cost to the club was \$0.00. The first winner was David Bushman. We look forward to the next raffle event in the near future.



2021 First Quarter Challenge

The first quarter challenge is to create a piece using the lost wood process demonstrated by Art Liestman and Rick Urban.



Cody Walker: Lost Wood perfume bottle, Ash approximately 6" tall.



Cody Walker: Lost Wood perfume bottle, Ash approximately 6" tall.



Ron Bishop: ebony burl and spalted maple finished with Liberon finishing oil, 4" x 3"



Ron Bishop: cherry, finished with Liberon finishing oil, 7" x 3"



Ron Bishop: maple and holly. dyed red, sanding sealer then black dye, top coat, Deft semi-gloss lacquer, 7" x 5"



Dan Lutrell: hollowform



Dan Lutrell: negative space



Dan Lutrell: hollowform, mahogany, about 7" tall



Bob Silkenson: Tried beads for a different look!



Bob Silkenson: Tried beads for a different look!



Steve Kellner: wenge hollow-form bud vase on wenge base with maple veneer, 11"x 5"x 2"



Ray Deyo: cherry on the left and oak on the right



Steve Kellner: same wenge vase on 4" x 1" base, shellac finish



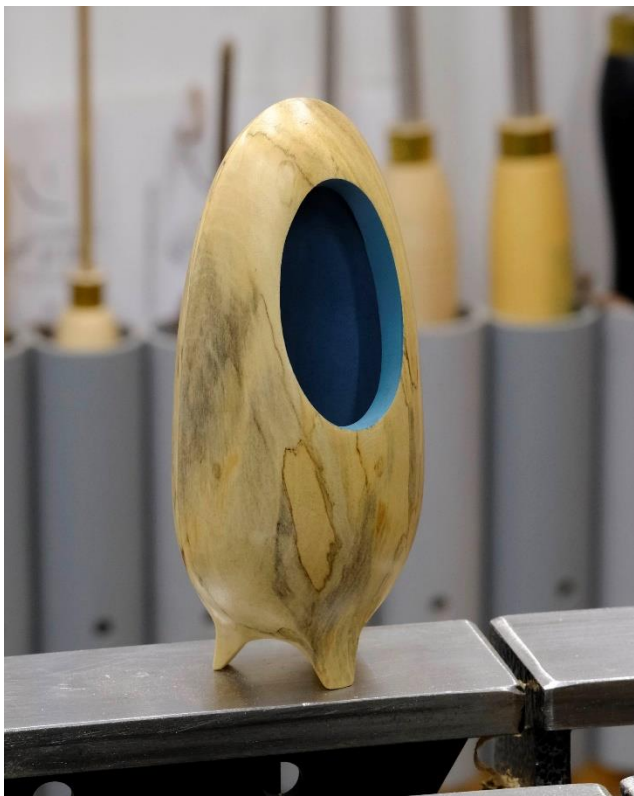
Chuck Horton: koa, 5" x 3" x 2 1/4", finished with wipe on poly



Chuck Horton: Koa piece before reassembly. Lost wood was 1/2" maple.



Chuck Horton: walnut glue-up. It is meant to copy a vase I saw at a Rooms to Go store. 8" x 3 1/2" x 2 3/4"



David Bushman: spalted gum with milk paint on the interior and Woodturners finish on the exterior.

2021 Remaining Challenges

- 2nd Quarter - For the kitchen, other than a bowl or platter
- 3rd Quarter - Item with at least 4 individually turned components
- 4th Quarter: - Child's toy, with kid safe parts and finish

Show and Tell



Robert Marchese: Eastern red cedar bowl, finished with edible mineral oil, 2.75" x 5.75". The blank was from a dead tree cut down 8 years ago. The pith and several growth rings had rotted away.



Robert Marchese: Nantucket Lightship Basket mold, in the foreground, with two older ones; it measures 8"

in diameter and 7" tall. The finish is polyurethane. (Search the internet for "Nantucket lightship basket mold" for more information.)



Alan Harrell: 6" walnut basket illusion.



Alan Harrell: 6" walnut basket illusion



Chris Waggener: 5.5" dogwood bowl that has a black soap stone and crape myrtle branch inlay. (This is due to me making a funnel out of it.)

The finish is General Finish wood bowl finish.



David Bushman: white oak with a walnut oil finish.



Chuck Horton: The bowl is bradford pear with a CA glue finish. I thought it would be interesting to do a top rather than a stem. It was.

February Demonstration

David Bushman introduced Dennis Belcher, who provided his Zoom demo titled "When Good Wood Cracks". He discussed several ways of dealing with cracked turnings. Most methods favored creating an

artistic or whimsical piece rather than a functional one. Dennis provided several handouts which were distributed by email in advance of the meeting. Those handouts and more can be found on his website at DennisBelcher.com. The following pictures illustrate some of the methods he discussed.



Question: How many ways can you deal with a crack?



Make a fixture to hold your chuck off the lathe if you need to position the work in an orientation other than horizontal. Buy bolts to match your chuck thread size. One of the handouts was a dimensioned sketch of the fixture.



This shows a plastic template from Big Island Engraving. The template is used to rout out a hole for a butterfly or other decorative inlay. Hot melt glue the template in place and drill a starting hole for the very tiny router bit. Blue tape can be used to ease removal of hot melt glue, though it usually comes off cleanly.



Use splines for repair or decoration. This piece is by Jerry Kermode. Cut slots for splines with a biscuit cutter.



Trace a piece of line art downloaded from the internet and then selectively carve and cut out to remove or disguise a defect.

Hot melt glue a shelf to a piece to safely cut a slot with a biscuit cutter. Stack a spline under the biscuit cutter to cut a double width slot.



Use a layout guide for drilling equally spaced holes for laces or staples. Irregular spacing looks sloppy.



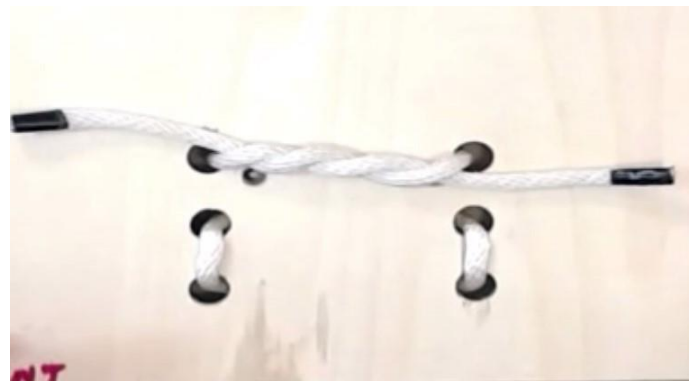
Here are two examples of staples.



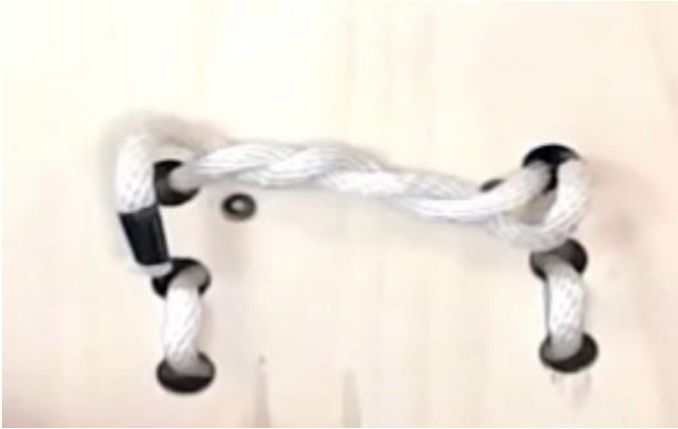
Make staples with 12 or 14 gauge copper wire. Be sure to use a hard and smooth surface to get smooth staples.



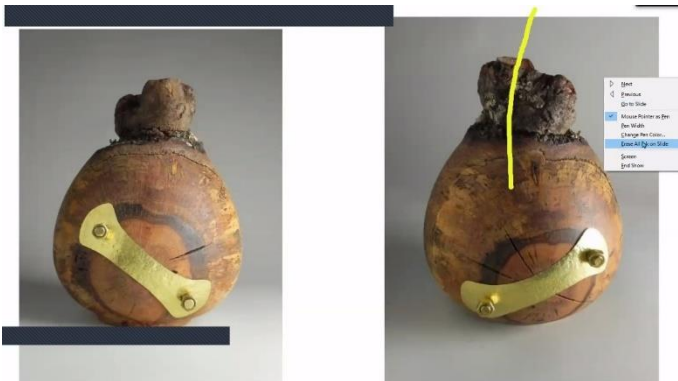
Use inlays for crack repair or decoration. These inlays were tapered in size for effect. In some work, one might want to use all the same size. Check out Big Island Engraving on the internet for kits and instructions. Dennis also offered kits for sale.



This illustrates use of a fisherman's twist knot to terminate a lacing.



Tuck the bitter ends into holes to complete the lacing neatly



This hollow form was decorated with a hammered brass plate and bolts



This piece had a rim crack. It was carved to look wrapped around and the splines added to make it appear that the piece was actually wrapped.



This cracked goblet was used to stimulate discussion as to how to treat the crack. Some options were: (a)

discard, (b) cut out the cracked part and carve scallops around the edge, (c) make it shorter, (d) drill holes and lace around the top. In short, use your imagination.



Contact information for Dennis Belcher.

His demo video can be accessed at:

<https://youtu.be/Ky5mXzO0dkw>

Future Demonstrations

From David Bushman, Vice President:

First off, I want to let everyone know that Stan VanDruff has offered to provide video assistance to anyone wishing to do a club demo. Stan will not just be the guy behind the camera pushing the record button. He will help plan, video and edit the production so all you have to do is bring your wood turning skills to the session. Stan will help you produce a high-quality demonstration that our club and maybe neighboring clubs can enjoy. These will not be live demos, but will be in a prerecorded format so you have flexibility on when you want to make it. This is a great service he is offering and I hope we take advantage of it. I know I am thinking about it. Thank you, Stan.

March 18 at 6:30 – MAKE A REMINDER NOTE. There will be a panel discussion on photography. I

have assembled a panel that will present a broad range of techniques from a professional style rig to an iPhone and a piece of poster board. Either method can have stunning results.

April – Dan Luttrell will present a demonstration highlighting his piercing technique. Stan VanDruff will provide his video expertise to produce this demo.

May – In keeping with our second quarter kitchen gadget challenge, Kai Muenzer will come to us from Canada to demonstrate creating some interesting salt and pepper shakers.

June – I would like to set up a demonstration about carbide tools. My desire is for this to be a club demo if possible. If there is anyone who is a frequent user of carbide tools and would like to do a demo let me know. It could be a full-length demo or a shorter one followed by a panel discussion.

Membership

Eighty-four members renewed or joined as of March 10.

Persons who did not renew by March 1 have been dropped from the newsletter distribution list and from ZOOM meeting invitations. If you know someone who didn't get a newsletter, remind them to pay their dues!

News of Note

VIDEO SHOP TOURS

From the RW Shop Tour Committee: Ray Deyo and Stan VanDruff.

Whether your personal woodshop is located in the corner of a room or occupies an entire building, there are ideas within your shop potentially helpful to other club members. It might be how wood is stored, the arrangement of turning tools, your repurposed storage facilities, how you manage dust and debris, or whatever. You may have unknowingly done something that will help someone else.

Richmond Woodturners has begun a series of 30-minute shop tours. The plan is to share them with the membership at monthly meetings. Our objective is to see how shops are set up throughout the club and share creative ideas and problem solutions. We have completed tours at Steve Kellner and David Bushman's shops. Other volunteers so far are Chuck Horton, Gordon Kendrick and Bruce Robbins. Larry Yancey has indicated a willingness to have a tour and we are looking for others.

We have designed the tour to be simple, easy and stress free. The visit will be on a date of your choosing with a list of anticipated questions provided early so you can think about your answer before we arrive. To avoid any surprises, we will also fully review our approach with you before we begin.

We invite any Richmond Woodturners member to volunteer their shop for a tour. Remember, size and complexity of the shop is not the objective. We want shops of all sizes, whether it's full of sophisticated equipment or just a lathe in the corner. Best of all, we will come to you.

To volunteer your shop for an upcoming "RW Shop Tour", please send a note to Ray Deyo via the email listed below. He will contact you as soon as he can to begin the process. Eventually, we would like to visit every club member. Contact Ray at makeitround@comcast.net. We think this will be beneficial to everyone!

CULTURAL ARTS CENTER DISPLAY

This is your **last chance** to visit the Richmond Woodturner's display at the Cultural Arts Center in Glen Allen, 2880 Mountain Road, Glen Allen, VA. Hours are 9:00 – 5:00 Monday-Thursday, 9:00-9:00 Friday and Saturday, Noon-5:00 Sunday. The display will be in place through the **end of March**.

This is a family friendly venue, free admission and conveniently located close to exit 45 (Woodman Road) on I-295.

Income and Expenses

Previous Balance: (Feb. 2020)	\$9225.94
Income	455.41
Expense	\$625.00
New Balance	\$9056.35

Member Resource Contacts

The board discussed trying to re-establish a mentor program. Until a more formal program can be implemented, a list of people willing to advise members on any particular topic will be included in the newsletter. Beginning with:

Ray Deyo – Ray can give advice on purchasing a lathe as well as many other topics. Ray is the former owner of the Richmond Woodcraft with many years of turning and teaching experience as well as lathe sales. Reach out to Ray at makeitround@comcast.net.

David Sterling - A professional woodturner, has been turning since 1983 and professionally since 1988. He says "Never afraid to answer questions. Got a question? Just ask." His cell number is 804-683-8418.

Walt Bennett - My best "expertise" would be vending at art, craft & etc. shows. My wife and I have been doing that since 2000. Everything from low to high end and pretty much across the country. theonewaltben@gmail.com and [\(https://www.abhats.com/\)](https://www.abhats.com/)

NOTE: The above persons have volunteered to be contacted. Most turners who have been at it for a few years have encountered problems, solved them and developed their own approaches to many woodturning techniques. If you have an issue you aren't sure how to handle, don't hesitate to reach out. You'll make somebody feel good and you might make a new friend.

Please feel free to volunteer your expertise.

For Sale

VACCUM CHUCK KIT: Jerry Fisher has a never used kit for sale. He is selling the works for any reasonable offer. Items priced individually are as follows:

1. HF 2 Stage Vacuum Pump...\$150
2. Gast Vacuum Gauge Kit \$100
3. Hold Fast 3.5 inch adaptor \$40

Consists of pressure gauge, bleeder valve, mounting bracket, hardware, and 6' of air hose for use with the E-Z Vacuum Adapter or Oneway Rotary Adapter.

4. E-Z Universal Vacuum adapter.....\$65



Contact Jerry at seven7js@msn.com.

FREE: Model #C4J-2, #2 round style chuck jaws for a Penn State mini-grip 2" chuck. I bought this at Alton Bradford's tool sale, thinking it was for a OneWay chuck. It appears to be part of a Penn State Industries chuck set. I can't use it. Contact Chuck Horton at hortoncharles876@gmail.com if interested.



WANTED: Chuck Horton would like to buy a used NOVA Outrigger kit for his NOVA 1624 lathe. Contact him at 757-810-1553 or hortoncharles678@gmail.com

Tips and Tricks

Members are invited to submit entries they think will help other members. If you are passing on something you have learned from someone else or read in a publication, giving credit is always appropriate.

SERIOUS SAFETY WARNING

From Dan Lutrell:

The following applies to the lathe, as well as all other rotating equipment.

1. Never wear jewelry when operating a lathe.
2. Always tie back long hair when operating a lathe.
3. Never wear loose fitting clothing when operating a lathe. This includes unzipped sweat shirts, blousy sleeves, hoods, and hood draw strings.
4. Never reach across a rotating lathe.

Failure to follow these rules can result in death.

SANDING ODD SHAPES



From Robert Marchese: These are fids and I use them to hold sandpaper for various shaped turnings

REPLACING SANDING DISCS

From Larry Yancy: To remove used sandpaper adhered to a metal sanding disc, heat the disc with a heat gun to make it easy to peel off the old sandpaper. Then remove the remaining adhesive with “Goof Off.”

SEPARATE A GLUE JOINT or PAPER GLUE JOINT

From Chuck Horton: Microwave the piece to soften the glue bond. Microwaving works great for lost wood pieces. Because they are thin, 15 seconds or so is enough. Larger, thicker pieces will require more time. Do it in *short* intervals to avoid overheating. ***Do not overheat!***

Questions and Answers

From John Daniel: Does anyone have an electric corded chainsaw that they use and that they are happy with? He is contemplating a purchase and would welcome some feedback.

His email is: jwdaniel@me.com. Please copy the newsletter editor at hortoncharles@gmail.com if you want your comments published.

2021 Officers and Committees

Officers

President - Steve Kellner
 Vice President - Dave Bushman
 Secretary - Larry Yancey
 Treasurer - Cody Walker

Directors

Membership Director - Chuck Bajnai
 Activities Director - Katharine Harris
 Resource Director - Stan VanDruff
 Past President #1 - Ray Deyo
 Past President #2 - Bruce Robbins

Committee Chairpersons

Turning Competition - Jim O’Hanlon
 Audio/Video - Jared Parker
 Social Media - Vacant
 AAW Women in Turning Liaison - Meg Turner

Newsletter Staff

Editor - Chuck Horton
 Contributing Writer/Reviewers
 – Izumi Miller
 – Ann Horton
 Photographer - Tim Warren

From the Editor

NEWSLETTER PRODUCTION TIMETABLE

Meetings occur on the 3rd Thursday of the month at 6:30. Log in anytime after 6:15. Do not wait until 6:30.

The newsletter will be published on the Monday prior to the meeting.

Members are invited to submit pictures of their work for Show and Tell and for Challenges. Members are also invited to submit items for sale, tips and tricks, and to post questions about woodturning.

Email entries to hortoncharles876@gmail.com. For Show and Tell pictures, as well as Challenge pictures, copy to Steve Kellner rwtpresident202122@gmail.com.

Newsletter entries may be submitted in the body of an email or attachment in Word, PDF or JPEG. Entries from *members or board members* may be submitted any time **prior to Wednesday of the week before the meeting**. Late entries will be held for publication in the next newsletter.

Logo Designs



By Bruce Robbins and Herb Walke

Version 1
(with top left part
of "R")



Version 2
(without top left part
of "R")

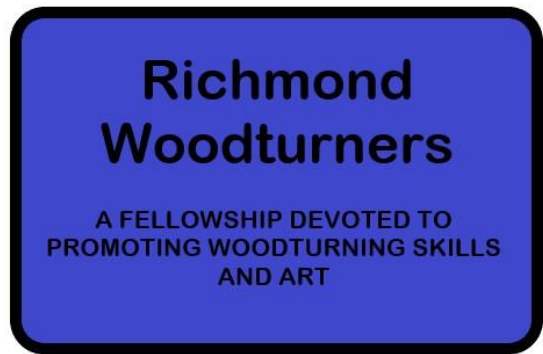


Version 3



Version 4

By Steve Schwartz



By Chuck Horton

Sponsors and Friends of the Club

Organizations such as the Richmond Woodturners, Richmond Penturners and James River Woodcarvers would not exist if it weren't for the kindness of their sponsors. We are blessed and grateful to have the Richmond Virginia Woodcraft store supporting us and our activities. Members get a 10% discount on meeting nights for most turning related items.

Please remember this and support them at every opportunity! For the classes provided at this location see: <https://www.woodcraft.com/stores/richmond/classes>.

Look for classes taught by Ray Deyo, Clark Brummett, David Sterling, Brian Noble-Marx and others.



Contact the store at:

Phone: [804-355-3945](tel:804-355-3945)

Fax: 804-355-2532

Email: richmond-retail@woodcraft.com

9862 West Broad Street

Glen Allen, VA 23060

Mike Leigher

Got Wood? LLC - Online at <https://www.turningblanks.net>

Phone: (864) 378-5200

Email: service@turningblanks.net or mike@turningblanks.net