

RICHMOND WOODTURNERS

Newsletter

September 2023

www.richmondwoodturners.org



THE MISSION OF RICHMOND WOODTURNERS IS TO PROVIDE EDUCATION AND INFORMATION TO THOSE WHO ARE INTERESTED IN WOODTURNING AND TO PROMOTE WOODTURNING AS AN ART FORM WITHIN THE CLUB AND TO THE GENERAL PUBLIC

OFFICIAL CHAPTER
AAW
AMERICAN ASSOCIATION
OF WOODTURNERS

FEATURE



Our new Powermatic 3520C Lathe coming soon

The Powermatic® 3520C is the fourth evolution of the time honored lathe with many new and improved features. The 3520C has retained all the features of the prior models such as the sliding headstock, electronic variable speed with low and high speed ranges, the spindle lock, digital RPM readout, and a laser etched quill that is self-ejecting. The enhanced features include a movable control box for maximum versatility and an increased weight to 726 LBS. Additional features include a new ergonomic spindle lock design, a digital indexing readout, an Anti-rotation tailstock key for smoother operation, a set of dead centers which hold a spindle for visual comparison, a two position mount for the optional bed extension, and a sliding hammer knockout rod with brass tip. Maintain speeds as low as 15 RPM. Adjustable riser blocks for 4 inches of height adjustment, allowing maximum comfort when turning. Extended spindle nose increased access to the work piece. Fully enclosed VFD (Variable Frequency Drive) for increased user protection. Main power disconnect switch located on rear of headstock. Upgraded banjo features a non-marring, pinch style clamp for solid tool rest placement

Information taken from Powermatic website.



RICHMOND WOODTURNERS

Newsletter

September 2023

Table of contents

Mission Statement ,Feature	1
President's Corner	2
Quarterly Challenges	3
Blind Auction	3
September Program	3
Treasurer's Report	3
Zoom Information	3
New lathe donations	3
Turner's Talk	4
Woodcraft Guidelines for our Meetings	4
Future Demonstrations	4
August Demonstration	5
August Show and Tell presentations	6-7
September Show & Tell	8-12
Quarterly Challenge	13-16
Segmenting Discussion	17
Upcoming Regional Events	18
Door Prize	19
Questions/Answers	20
Tips and Tricks	21
For Sale/ Want to Purchase	22-23
2023 Officers and Committees	24
Facebook Group	24
From the Editor	25
Club Membership dues	24
AAW & Sponsors and Friends of the Club	25

President's Corner

We had an excellent meeting in August with an excellent turnout at Woodcraft. Unfortunately, I forgot to send the Zoom invite to Dave so some had an issue joining via Zoom. For future reference, please know I use the same meeting ID for all our meetings so any invite in your mail history will work.

As for the meeting itself, we had excellent discussion during the Show & Tell which I, and I hope everyone else, enjoyed. We did cut into Dave's time for demonstrating the technique he uses to turn bowls that he then turns into elegant footed bowls. Dave, great job on the demonstration! I had not thought about how you layer the rough turning and project the base shape that will be seen after carving. Thanks for the insight.

I hope you are as excited about our pending new lathe as I am. Our members work hard at keeping Richmond Woodturners a top notch club and we should provide the best equipment we can for each of us. We have directed our focus with emphasis on mentoring and technical support through the Turner's Talk sessions and have a desire for greater member demo participation from the front of the room. With the increase of member demos, and some outside folks as well, we will be seeing more and more use of the lathe. Our current lathe has been with us for many years and is still very functional, but it's time to reward ourselves with a newer version. It will benefit everyone. In addition to the features described in the feature article on page 1, the new lathe will be more mobile than the old one. The plan is to make it available during Turner's Talk and during some demos for members to participate. PLUS, the fortunate winner of the blind auction will be able to take our existing lathe home to be used and enjoyed for many more years.

Thanks for listening.

Steve



RICHMOND WOODTURNERS

Newsletter

September 2023

Quarterly Challenges

3rd quarter- turn something with feet

4th quarter- turn a Christmas ornament

September Program

The September meeting will consist of two shop tours. The previous ones have been very educational and informative

Blind Auction for our current Powermatic 3520A

Here are the details of the blind auction of our current 3520A lathe. Included are the mobile base, knockout bar, and magnetic light. Open to Club members only.

Submit your final bid via email to Chuck Horton (hortoncharles876@gmail.com) before the September 21 meeting.

Bidding shall begin with a minimum of \$1,000.00 and shall be in increments of \$25. The winning bid will be \$25 more than the next highest bid.

In the event of a tie bid, the bidders will be invited to rebid until a winner is determined.

The winning bidder will be notified either at the meeting or shortly after, as well as published in the newsletter.

The lathe will be available shortly before expected delivery of the new lathe, now sometime in November.

We can arrange local delivery for an additional \$50

PLEASE BRING AND WEAR YOUR BADGE TO THE MEETING!

If you didn't sign up, but want one, please contact Chuck Horton (hortoncharles876@gmail.com). They are free to members.

Treasurer's Report

Previous Balance (8/1/2023)	\$13,992.67
Income	788.29
Expense	102.20
New Balance (9/1/2023)	\$14,678.76

Join meeting Via Zoom

Be sure to check your email each month for the sign in information to join the meeting with Zoom. If for some reason, it is not in your in box, simply refer back to a previous invitation for the information which remains the same from month to month.

The Zoom link will be active starting at about 6:15 on the evening of the meeting.

New lathe donations

We all received the exciting news about the new lathe that is on the way. We also received an email from Steve about an opportunity for members to make a tax deductible contribution toward the purchase of the lathe. If you have any questions about this, please contact Steve at rwtpresident202122stevek@gmail.com or any other board member.



RICHMOND WOODTURNERS

Newsletter

September 2023

Turner's Talk

Mentoring & Skills Development Workshop



The workshop meets at the beginning of our regular meeting at 5:30 PM at Woodcraft and have a time to talk turning. Come on in and let's talk shop. This month David Bushman will discuss embellishment and the various tools that are available for that purpose.

Look for more demonstrations and discussions coming in future months. Stay tuned.

Woodcraft Guidelines for our Meetings

Woodcraft graciously provides a space for the club to meet. The store closes at 7:00 PM and they have an employee stay until our meeting ends. They have requested that we:

- 1- Do not wander around the store after they close. Do all your purchases prior to the 7:00 PM closing time.
- 2- Stay in the meeting area until the meeting is over and we are ready to leave. If you do have to leave prior to the end of the meeting, please arrange that with the Woodcraft representative ahead of time.
- 3- That we all leave at the same time, taking all visiting outside the store, so the representative can lock up and leave.

Future Demonstrations

October – Demonstration of spindle gouge. More details to follow

November – A Christmas theme turn-a-thon.

December – Christmas Party



August Demonstration

David Bushman discussed and demonstrated how he chooses the style of foot he puts on a vessel or bowl and showed how he turns the bottom of a piece to prepare it for carving.





RICHMOND WOODTURNERS

Newsletter

September 2023

Show and Tell presentations

Please note: If you had Show and Tell or challenge pieces and your picture is not included, please forgive the omission. Some times, I am in the wrong position to get the shot or the picture was out of focus. The omission is not intentional.



Bob Silkensen



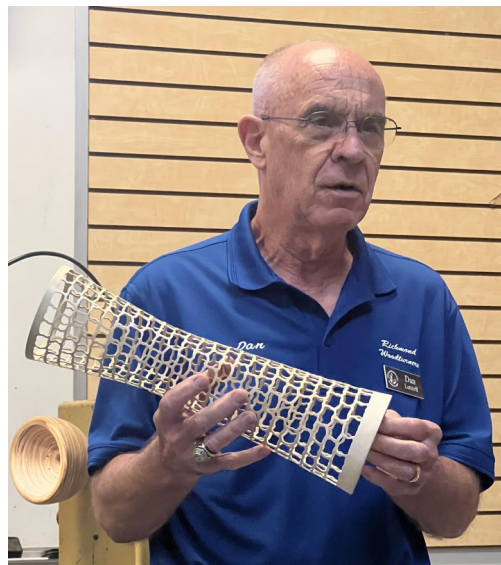
Chuck Banjai



Dan Currier



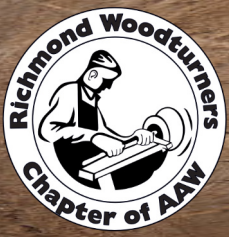
Chuck Horton



Dan Luttrell



Mike Squire



RICHMOND WOODTURNERS

Newsletter

September 2023



Izumi Miller



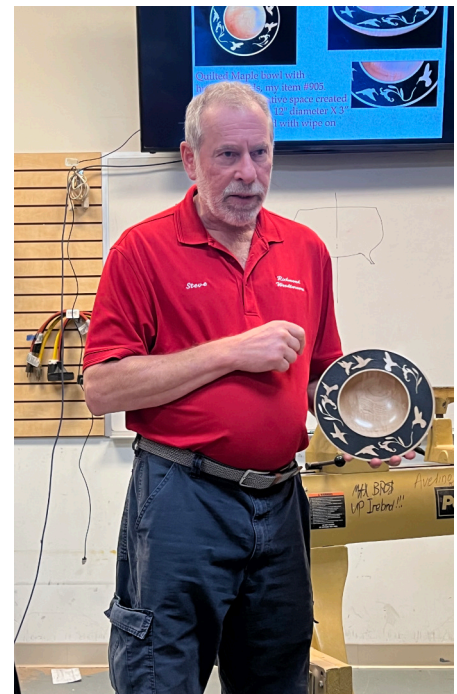
Richard Asby



Steve Kellner



Robert Gundel



Steve Schwartz



RICHMOND WOODTURNERS

Newsletter

September 2023

SHOW AND TELL

Steve Schwartz



Cherry Bowl, Item #896. The squirrels are defined by using pyrography to texture the negative space.

Steve will be exhibiting at the Burwell Morgan Grist Mill "Art at the Mill" 15 Tannery Ln, Millwood, VA 22646 on Sept 23 through Oct 8. The art show supports the fully reconstructed dual transmission grist mill museum which is well worth the trip.

Katherine Harris



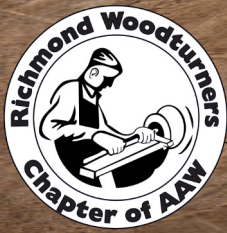
Holly with brown resin rim



Experiment glue up pattern using pallet wood



Simple bowl with blue detailing and gold rim



RICHMOND WOODTURNERS

Newsletter

September 2023

Terry Stevens



The bowl is a piece of maple that I got from Jay Pugh. I was challenged to turn a different style bowl. The bowl is 9 inches wide 3 1/2 inches high with a 3 1/2 inch bottom.

Chuck Horton



Pecan, 8 1/2" wide x 1 1/2" high. This started out as a much larger platter blank that was rough turned wet. It warped a lot as it dried and this is what was left.



RICHMOND WOODTURNERS

Newsletter

September 2023

Jerry Harvey



Dyed maple vase 8" tall. Friction polish outside, danish oil inside.



Scott Synnott



Cherry, twice turned with TY oil finish. Beall buffed



RICHMOND WOODTURNERS

Newsletter

September 2023



Steve Kellner

I'm calling this a 'balloon' ornament. It's made from a scrap of oak burl with ebony basket and top, 2.5" diameter x 4.5" tall finished with CA glue and Beall buffing and waxing. I had planned to stain it red but cracked the base while hollowing. After using CA glue to repair, I decided it was easier to put CA finish on the whole thing rather than try to clean it up enough to stain.

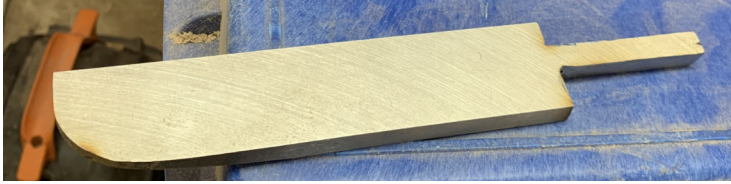
David Bushman



This chestnut oak vessel was carved and then embellished with artist acrylic paints. The exposed wood is finished with wipe on poly.



Terry Stevens



This negative rake scraper I made myself. I purchased, a piece of high-speed steel from Amazon, cut the shape out with the tang. I found an old white oak piano leg that had the wheel on it in the ferrule. Jay Pugh was showing me how to do some spindle work, so he cut the handle out with me and I put the negative rake scraper together. I glued it with Gorilla glue. It works great! It has a 40° bevel on the bottom and a 20° on the top.





RICHMOND WOODTURNERS

Newsletter

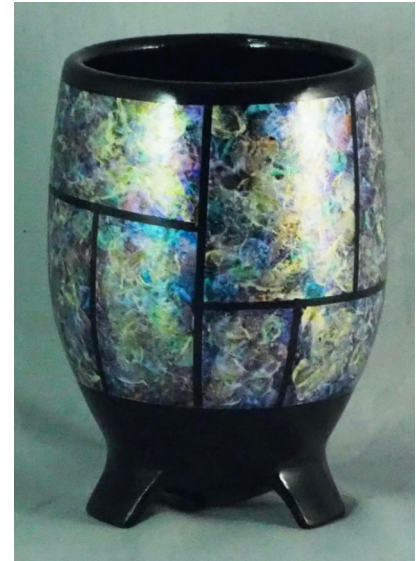
September 2023

Quarterly Challenge

Cody Walker



Party Dip Bowl, oak, walnut oil finish



Stained Glass Vessel,
Iridescent Paints

Ray Deyo



Three footed 8 1/2" tall holly
vessel with an oil-urethane

Jim Thorp



This is something I turned and
built with feet.



RICHMOND WOODTURNERS

Newsletter

September 2023

Dan Luttrell



American Holly bowl with feet.
8" diameter x 1-1/2" high.
Turned green. Oil finish



Hard Maple bowl with feet.
10" diameter x 3" high.
Carnauba wax finish.



American Holly bowl with feet. 16" diameter x 5" high.
Turned green. Bleached. No finish.

The other side of these just look like bowls!

Jerry Harvey



Cuban mahogany 10" tall . Carved legs with burned enhancement, danish oil.

Chuck Bajnai



Something with feet.. Or was it something with legs? I didn't remember so I did it with both legs and feet



RICHMOND WOODTURNERS

Newsletter

September 2023

Kevin Fitzpatrick

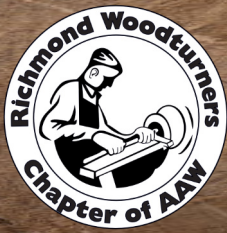


A shallow 9" by 9" Zebrawood platter on a 3" tiger maple three legged base.
Finished with multiple coats of Danish Oil.

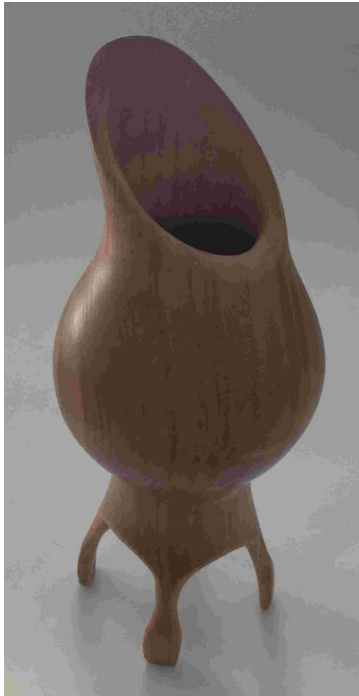
Chuck Horton

Left side: unfinished mulberry, 5" x 1 1/2", feet will be about 3/4" long. Right side: cherry lidded bowl 5" x 3", with 1/8" long feet. Finished with Watco Danish oil, 3 coats.





Steve Kellner



The Challenge piece is a cherry vase made from a piece left over from making a bowl. It is 4" diameter x 9" tall finished with walnut oil followed by Beall buffing and wax. Sanding around the feet was taking forever until I made a 'Scotch-Brite' sander from four 3"x 3" layers of red Scotch-Brite attached to a small mandrel; not perfect but worked a lot faster than a piece of sandpaper.



David Bushman



These cherry pieces are the forms that I brought to my August club demo. They display the two primary styles of feet that I like to use. The finish is oil based urethane.

DISCUSSION ON THE FUNDAMENTALS OF SEGMENTING

October 7, 2023 9:30 AM - 3:00 PM

At Larry Yancey's shop

3326 Ellsworth Road

Richmond, Va 23235

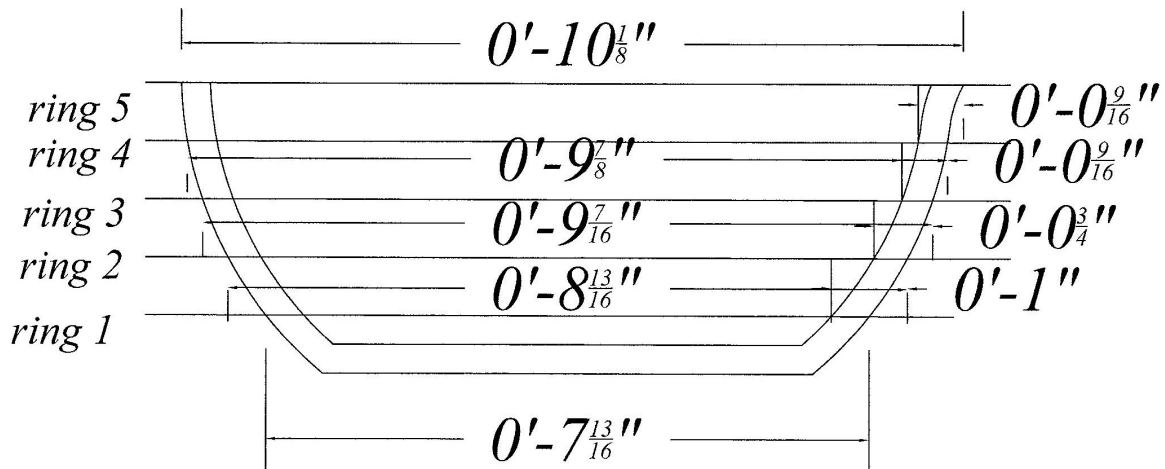
Limited to first 3 people

to register- contact Larry at

lpyancey@gmail.com

804-399-3394

Discussion will include strategies for planning for a project, cutting segments, glue up and other related topics. We will be doing bowl design, calculations for rings, cutting segments, some glue up and generally have some fun.





RICHMOND WOODTURNERS

Newsletter

September 2023

Upcoming Regional Events



September 22-24, 2023
Lancaster Marriott Hotel,
Lancaster, PA



October 13-15, 2023

The Higher Ground
Conference & Retreat
Center, West Harrison, IN



Virginia Woodturning
Symposium
November 2-3, 2024
ExpoCenter, Fishersville, Va.



North Carolina Woodturning
Symposium
November 3-5, 2023
Greensboro Coliseum,
Greensboro, NC



RICHMOND WOODTURNERS

Newsletter

September 2023

DOOR PRIZE

David Haywood provided a piece of cherry as a door prize for the August meeting. The prize was won by Jim Klein, a new member. Congratulations Jim.

Thank you David!!



Jim Klein

NOTICE FOR FOR SALE AND WANT TO PURCHASE ITEMS

Ads for "For Sale" and "Want to purchase items" can run for multiple months, but unless you contact me and request that it run again in subsequent issues, it will be deleted after the month they are shown. Please let me know if you have any questions or concerns about this.



RICHMOND WOODTURNERS

Newsletter

September 2023

QUESTION- Can a bowl gouge be used on spindle work and can a spindle gouge be used on bowls?

ANSWERS- There several folks responding to this question, but the consensus appears to be the same.

Yes, however, a spindle gouge should be used with caution on a bowl blank. No heavy cutting because the shank is much weaker.

Chuck Horton

Great question. Here's my take: The simple answer to the question is, "yes", but the follow up questions should be (a) is the tool being used as intended and (b) is it safe? The primary difference between the two gouges is depth of flute with the spindle gouge shallow and the bowl gouge deep. In the sharpening process, the shallower flute tends to produce a thinner, more pointed tip lending itself to greater detail. With the purpose of the flute being an avenue for chip removal, the deeper fluted tool more stable with less vibration as it reaches off the tool rest and one having greater capacity for precision and detail, is there true universality between the two gouges? No. Too often we get into trouble by using the wrong tool. Enjoy the moment and work in a safe environment by using the tool intended for the job. **Ray Deyo**

I find that the bowl gouge is much heavier and can handle the more violent work of bowl turning. I have watched some highly respected turners use a spindle gouge to rough a bowl. The spindle gouge used is a bigger one, but still they use it. Even after seeing that I find that a bowl gouge gives me a safer feel in my hands when I chuck up a large chunk of wood. I am still trying to learn the best use and real differences in a deeper flute vs. shallower flute bowl gouge. I find that a detail spindle gouge does have specific applications in bowl work. So, "beef, flute, grind" make the bowl gouge the one I feel safer using. **John Daniel**

To me a bowl gouge is more of a work horse and can remove material more aggressively but is not suited for detail work whereas the spindle gouge has a delicate tip and better suited to detail work. A spindle gouge may be dangerous for certain bowl applications like turning the interior bottom of a bowl. **Cody Walker**

I seem to remember someone, English, I believe, who turned bowls (inside) with a spindle gouge, turning it almost upside down, but I cannot find anything on it. It was scary to me, but it would be a shame to leave it out of the discussion, if it is true. Anyone else remember this? **Dan Luttrell**

I researched this a bit...to make a long story longer: The bowl gouge flute is curved with wings and designed for turning wood bowls. A spindle gouge has a more open flat flute and is best used for details and spindle turnings.

A bowl gouge has a round metal exterior shaft with a curved interior flute. The curved flute might be U-shaped, V-shaped, or parabolic in shape.

The spindle gouge, like the bowl gouge, has a round metal shaft. However, the flute of the spindle gouge is a wide-open, shallow U-shape which divides the metal shaft in half. Because less material surrounds the tip of the spindle gouge, **this tool is less fortified at the tip** compared to the bowl gouge.

Chuck Bajnai references an excellent article from Kent Weakley of turnawoodbowl.com. The article is too long to include here, but you can go to his website: <https://turnawoodbowl.com/bowl-gouge-vs-spindle-gouge>



RICHMOND WOODTURNERS

Newsletter

September 2023

Tips and Tricks

Painter's tape, also known as blue tape, is a common tool used in painting and woodworking. However, it can also be used to make a cost-effective double-sided tape when combined with CA glue. This method is especially useful when working projects that require precise alignment or when traditional double-sided tape would leave a residue.

To make double-sided tape using painter's tape and CA glue, begin by applying a strip of tape to each surface that needs to be joined. Ensure that the strips are slightly longer than the area of contact between the two pieces.

Next, apply a small amount of CA glue to one of the strips of tape. Be careful not to use too much glue as it can squeeze out and permanently glue the pieces together. Using a silicon spatula or similar tool, spread the glue evenly over the surface of the tape.

Then, carefully align the two pieces of material and press them together firmly. The glue will bond the two pieces together, creating a strong hold.

Once the glue has cured, usually within a few seconds, you can get to work! Cut or work the wood however you need. This method of making double-sided tape is not only cost-effective but also allows for easy cleanup. Since the tape is easily removable, and doesn't leave a residue, it is ideal for temporary bonding applications. Additionally, the use of painter's tape and CA glue allows for greater flexibility in terms of size and shape of the double-sided tape.

In conclusion, the combination of painter's tape and CA glue is a practical and affordable way to create double-sided tape. This method is easy to use and can be adapted to suit a wide range of projects. With a little practice, you can create a strong and reliable bond that will hold your projects together securely.

Submitted by Chuck Horton



RICHMOND WOODTURNERS

Newsletter

September 2023

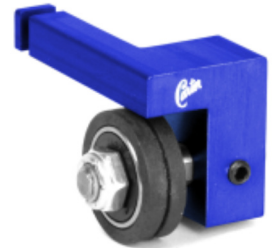
For Sale:

Trick out your ShopSmith bandsaw with Carter Bandsaw Guides and / or upper Stabilizer. Two guide types to serve two distinct performance enhancements.

Carter Bandsaw Guides: Model SHS11 for Shopsmith 11" bandsaw. Upper and lower sealed double bearings improves bandsaw performance to reduce blade fatigue and improve cutting accuracy. Works in conjunction with existing thrust bearings. Intended for straight resaw / rip cuts and traditional radius cuts. new in box. Never used. Sells new for \$132.95. Asking \$65.00 <https://carterproducts.com/band-saw-products/band-saw-guides>



Carter Blade Stabilizer: Model SHS1 for Shopsmith 11" bandsaw. Replaces upper 3 sided support guide to allow cutting tight radius complex curves that factory guides would not allow. Intended for use with 1/4" and narrower blades for elaborate curve cuts. New in box. Never used. Sells new for \$85.99. Asking \$43.00. <https://carterproducts.com/band-saw-products/band-saw-stabilizer>



Contact: Bill Buchanan (317) 727-9870 Buchanan198@gmail.com

Walt Bennett



Yes, it's Harbor Freight, but it's a solid and very good saw! Asking price is \$275. Saw with a carbide blade plus stand. Cost me close to \$600 new. Got it to build a deck but that's the last one I'm building and I've no other big projects (and don't want any!), so it's for sale. Used very lightly and in almost new condition. Cash and credit cards accepted. Located at 8263 Stumpy Road, Hanover.

Walt Bennett 703-864-2767



RICHMOND WOODTURNERS

Newsletter

September 2023

Bob Marchese



I have an antique workbench for sale. Manufactured by the Grand Rapids Hand Screw Co. Vintage 1917. Used by a piano company of Rochester, NY. and purchased from an antique dealer in Williamsville, NY in 1998. Vises have been rebuilt and used by a professional maker of wooden chairs for the last 25 years. Some stain in a couple of places. Plywood lower deck provides great storage.

\$400.00

Please call me at 585-409-7087

Want to buy

I'm looking for some more chucks 1-1/4 with 8tpi. I'm also looking for an extension bed and an outrigger for a Nova DVR 3000 lathe.

Terry Stevens
804-873-1040
brotherman1963@yahoo.com

Interested in replacing my current Harbor Freight lathe, Also want to purchase a surface planer. Jim Webb,
jimewebb@comcast.net
804-572-3573



RICHMOND WOODTURNERS

Newsletter

September 2023

2023 Officers and Committees

President - Steve Kellner
Vice President - Dave Bushman
Secretary - Chuck Horton
Treasurer - Cody Walker
Directors :
Membership Director - Chuck Bajnai
Activities Director - John Daniel
Resource Director - Stan VanDruff
Information Director- Stan VanDruff
Newsletter Director- Larry Yancey
Past President #1 - Ray Deyo
Past President #2 - Bill Buchanan
Committee Chairpersons:
Audio/Video - Jared Parker
Social Media - Vacant
AAW Women in Turning Liaison - Meg Turner

A very special thank you to Izumi Miller for her contribution to this newsletter. She proof reads it and makes valued suggestions on ways to make it more readable.

Facebook Group

This Facebook group was created to provide a platform for our members to share project photos, to ask questions and, generally, to carry on the dialogs in which we so often engage during our monthly meetings.
<https://www.facebook.com/groups/832886010074989/>.

Club Membership dues

Individual—\$35, Family (must reside at the same address) —\$45, Student (under 19 years)—\$15. For more details, please visit the website at www.richmondwoodturners.org and go to the membership tab.

From the Editor

MEETINGS- Meetings are on the 3rd Thursday of the month at Woodcraft. 5:30- 6:15 PM, Turners Talk, 6:30-7:15 PM business meeting, 7:15-8:30 PM program. If you are attending via Zoom, you may log in at any time after 6:15 PM.

TURNER'S TALK- For those who have knowledge to share and those who have questions. A time to exchange ideas and knowledge. Also just a time to talk shop.

SHOW AND TELL- Email pictures of your work to the newsletter editor at rwtnewsletter@gmail.com for publication in the newsletter and for the presentation used for the meeting. Submissions to rwtnewsletter@gmail.com will automatically be forwarded to Steve Kellner. The deadline for submission of show and tell items to be included in the newsletter is one week prior to the meeting by 5:00 PM



RICHMOND WOODTURNERS Newsletter

September 2023

AAW



American Association of Woodturners is a nonprofit organization dedicated to advancing the art and craft of woodturning worldwide through education. With more than 16,000 members and over 365 local chapters globally, AAW members include amateurs, hobbyists, professionals, gallery owners, collectors, tool and equipment suppliers, and others.

AAW wants to help you enrich your woodturning experience and pursue your aspirations wherever you are on your woodturning journey. We invite you to learn and grow with us and become part of the special community that is woodturning. They provide an almost limitless amount of resources: written articles, videos, and a yearly national symposium. Check them out at www.woodturner.org. Consider joining today.



Sponsors and Friends of the Club

Organizations such as the Richmond Woodturners, Richmond Penturners, and James River Woodcarvers would not exist if it weren't for the kindness of their sponsors. We are blessed and grateful to have the Richmond Virginia Woodcraft store supporting us and our activities. Members get a 10% discount on meeting

nights for most turning related items.

Please remember this and support them at every opportunity! For the classes provided at this location see:

www.woodcraft.com/stores/richmond/classes

Look for classes taught by Ray Deyo, Clark Brummett, Brian Noble-Marx and others.